



TABLES, SINKS & SHELVES

CATALOG 2026



WORKTABLES WITH CABINETS



Stainless Steel Cabinet + 6" Backsplash + Sliding Doors + 6" Legs

• 18 & 16 Gauge • 430 Stainless Steel • NSF approved

Item	Description	Overall Dimensions
45281	With 6" Backsplash and Sliding Doors	30"D x 48"W x 36"H
45282	With 6" Backsplash and Sliding Doors	30"D x 60"W x 36"H
45283	With 6" Backsplash and Sliding Doors	30"D x 72"W x 36"H
Item	Description	Overall Dimensions
43480	With 6" Backsplash and Sliding Doors	24"D x 48"W x 36"H
43481	With 6" Backsplash and Sliding Doors	24"D x 60"W x 36"H
43482	With 6" Backsplash and Sliding Doors	24"D x 72"W x 36"H



Stainless Steel Cabinet + Sliding Doors + 6" Legs

• 18 & 16 Gauge • 430 Stainless Steel • NSF approved

Item	Description	Overall Dimensions
44192	Sliding Doors	30"D x 48"W x 36"H
44193	Sliding Doors	30"D x 60"W x 36"H
44194	Sliding Doors	30"D x 72"W x 36"H
Item	Description	Overall Dimensions
44186	Sliding Doors	24"D x 48"W x 36"H
44187	Sliding Doors	24"D x 60"W x 36"H
44188	Sliding Doors	24"D x 72"W x 36"H



Stainless Steel Cabinet + 6" Backsplash + Sliding Doors + Drawers + 6" Legs

• 18 & 16 Gauge • 430 Stainless Steel • NSF approved

Item	Description	Overall Dimensions
45284	With 6" Backsplash, Sliding Doors and Drawers	30"D x 48"W x 36"H
45285	With 6" Backsplash, Sliding Doors and Drawers	30"D x 60"W x 36"H
45286	With 6" Backsplash, Sliding Doors and Drawers	30"D x 72"W x 36"H
Item	Description	Overall Dimensions
43483	With 6" Backsplash, Sliding Doors and Drawers	24"D x 48"W x 36"H
43484	With 6" Backsplash, Sliding Doors and Drawers	24"D x 60"W x 36"H
43485	With 6" Backsplash, Sliding Doors and Drawers	24"D x 72"W x 36"H



Stainless Steel Cabinet + Sliding Doors + Drawers + 6" Legs

• 18 & 16 Gauge • 430 Stainless Steel • NSF approved

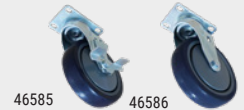
Item	Description	Overall Dimensions
44195	Sliding Doors and Drawers	30"D x 48"W x 36"H
44196	Sliding Doors and Drawers	30"D x 60"W x 36"H
44197	Sliding Doors and Drawers	30"D x 72"W x 36"H
Item	Description	Overall Dimensions
44189	Sliding Doors and Drawers	24"D x 48"W x 36"H
44190	Sliding Doors and Drawers	24"D x 60"W x 36"H
44191	Sliding Doors and Drawers	24"D x 72"W x 36"H



5" Dia. Casters For Worktables With Cabinet, Sliding Door And Drawers

Only for Worktables Cabinet with 6" height legs

5" Diameter x 1 1/4" Thick



Item	Description
46585	with Brakes
46586	without Brakes

Stainless Steel Knock-Down Worktables + Sliding Doors + 12" Legs

• 18 Gauge • 430 and 304 Stainless Steel • Enclosed Cabinet with Sliding Doors • Plastic Bullet Feet • NSF approved



430 Stainless Steel

Description	Height	Item (Tables With Flush Edge)	Item (Tables With 3" Overhangs)
30" x 48"	34"	28639 (Flush edge)	24397 (w/ 3" overhangs)
30" x 60"	34"	*28640 (Flush edge)	*24398 (w/ 3" overhangs)
30" x 72"	34"	*43721 (Flush edge)	*24399 (w/ 3" overhangs)
30" x 48" with 4" Backsplash	38"	28642 (Flush edge)	24403 (w/ 3" overhangs)
30" x 60" with 4" Backsplash	38"	*28643 (Flush edge)	*24404 (w/ 3" overhangs)
30" x 72" with 4" Backsplash	38"	*28644 (Flush edge)	*24405 (w/ 3" overhangs)



28639

304 Stainless Steel + 4" Backsplash + 3" Overhangs

Item	Description	Height
24401	30" x 60"	34"
24402	30" x 72"	34"
24406	30" x 48" with 4" Backsplash	38"
24407	30" x 60" with 4" Backsplash	38"
24408	30" x 72" with 4" Backsplash	38"



24397



24403



website: www.omcan.com
email: sales@omcan.com
call: 1.800.465.0234
fax: 905.607.0234

Limited quantities available. Prices valid to authorized Omcan Dealers only. Special prices on this flyer may not be included to any special freight program. E&OE. Prices will be subject to change as per exchange rates.

NOT APPLICABLE TO PRIOR PURCHASE.

PRICES MAY BE SUBJECT TO INCREASE ON SOME ITEMS DUE TO NEW AND FUTURE TARIFF TAXES POLICIES

All prices are DEALER'S NET





Solid Poly-Top Tables Frames

(Boards Sold Separately)

Item	Description	Weight	Dimensions
40411	24" x 48"	42 lbs.	24"D x 48"W x 36"H
41274	30" x 36"	40.7 lbs.	30"D x 36"W x 36"H
41276	30" x 48"	47.3 lbs.	30"D x 48"W x 36"H
*41278	30" x 60"	54 lbs.	30"D x 60"W x 36"H
*41280	30" x 72"	60.5 lbs.	30"D x 72"W x 36"H



Solid poly-Top Tables

Poly-Top Boards

(Boards Sold Separately)

3/4" Poly-Top Boards

Item	Dimensions
43185	24"D x 48"W x 3/4"H
43187	30"D x 36"W x 3/4"H
43189	30"D x 48"W x 3/4"H
43191	30"D x 60"W x 3/4"H
43193	30"D x 72"W x 3/4"H

1" Poly-Top Boards

Item	Dimensions
43186	24"D x 48"W x 1"H
43188	30"D x 36"W x 1"H
43190	30"D x 48"W x 1"H
43192	30"D x 60"W x 1"H
43194	30"D x 72"W x 1"H



Solid Poly-Top Tables With 6" Backsplash

(Boards Sold Separately)

Item	Description	Weight	Dimensions
41247	24" x 48" w/backsplash	53 lbs.	24"D x 48"W x 42"H
41275	30" x 36" w/backsplash	48.4 lbs.	30"D x 36"W x 42"H
41277	30" x 48" w/backsplash	57.2 lbs.	30"D x 48"W x 42"H
*41279	30" x 60" w/backsplash	66 lbs.	30"D x 60"W x 42"H
*41281	30" x 72" w/backsplash	75 lbs.	30"D x 72"W x 42"H



Solid Poly-Top Tables with 6" Backsplash

Poly-Top Boards For Table Frame With 6" Backsplash

(Boards Sold Separately)

3/4" Poly-Top Boards

Item	Dimensions
43195	20"D x 48"W x 3/4"H
43197	26"D x 36"W x 3/4"H
43199	26"D x 48"W x 3/4"H
43201	26"D x 60"W x 3/4"H
43203	26"D x 72"W x 3/4"H

1" Poly-Top Boards

Item	Dimensions
43196	20"D x 48"W x 1"H
43198	26"D x 36"W x 1"H
43200	26"D x 48"W x 1"H
43202	26"D x 60"W x 1"H
43204	26"D x 72"W x 1"H



Additional Undershelf For Poly-Top Tables

(Sold Separately)

Item	Description	Load Capacity
44279	Undershelf for Item 40411 & 41247 (24" x 48")	440 lbs.
44280	Undershelf for Item 41274 & 41275 (30" x 36")	440 lbs.
44281	Undershelf for Item 41276 & 41275 (30" x 48")	465 lbs.
44282	Undershelf for items 41278 and 41279 (30" x 60")	490 lbs.
44245	Undershelf for items 41280 and 41281 (30" x 72")	520 lbs.



Undershelf for poly-top table



Equipment Stands

• 430 Stainless steel construction (18 gauge) • Galvanized legs and undershelf • Adjustable feet • Table height is 24" • Lip size is 1 1/2"

Item	Description	Loading Capacity	Weight	Undershelf Capacity
24185	30" x 12"	460 lbs.	31 lbs.	350 lbs.
24087	30" x 15"	520 lbs.	34 lbs.	350 lbs.
22056	30" x 18"	600 lbs.	36 lbs.	400 lbs.
22057	30" x 24"	660 lbs.	40 lbs.	450 lbs.
22058	30" x 30"	750 lbs.	47 lbs.	450 lbs.
22059	30" x 36"	800 lbs.	51 lbs.	450 lbs.
22060	30" x 48"	860 lbs.	62 lbs.	500 lbs.
*22061	30" x 60"	600 lbs.	75 lbs.	500 lbs.
*22062	30" x 72"	680 lbs.	84 lbs.	500 lbs.



Undershelf For Equipment Stand

Item	Description	Dimensions	Loading Capacity
47549	Undershelf 30 x 12 For Equipment Stand 24185	24.4" x 10.2" x 1.96"	230 lbs.
47550	Undershelf 30 x 15 For Equipment Stand 24087	24.4" x 10.6" x 1.96"	260 lbs.
47551	Undershelf 30 x 18 For Equipment Stand 22056	24.4" x 13.6" x 1.96"	280 lbs.
47029	Undershelf 30 x 24 For Equipment Stand 22057	24.4" x 19.7" x 1.96"	290 lbs.
47554	Undershelf 30 x 30 For Equipment Stand 22058	24.4" x 25.6" x 1.96"	300 lbs.
47555	Undershelf 30 x 36 For Equipment Stand 22059	24.4" x 31.7" x 1.96"	330 lbs.
46932	Undershelf 30 x 48 For Equipment Stand 22060	24.4" x 43.7" x 1.96"	350 lbs.
47556	Undershelf 30 x 60 For Equipment Stand 22061	24.4" x 55.7" x 1.96"	370 lbs.
47558	Undershelf 30 x 72 For Equipment Stand 22062	24.4" x 67.7" x 1.96"	390 lbs.



Equipment Stands – All Stainless Steel

- 18-Gauge 430 Stainless Steel top shelf with 2" turn up on left-rear-right sides
- 18-Gauge 430 Stainless Steel Undershelf and 2 each hat channel
- Stainless Steel leg (4) and socket, plastic bullet foot with S/S clad



Item	Description	Load Capacity	Undershelf Capacity	Net Weight
47691	30" x 12"	420 lbs.	300 lbs.	18.1 lbs.
47692	30" x 15"	420 lbs.	300 lbs.	22.8 lbs.
47693	30" x 18"	420 lbs.	300 lbs.	27.6 lbs.
47694	30" x 24"	420 lbs.	300 lbs.	32.4 lbs.
47695	30" x 30"	551 lbs.	330 lbs.	37.2 lbs.
47696	30" x 36"	595 lbs.	363 lbs.	42 lbs.
47697	30" x 48"	639 lbs.	363 lbs.	46.8 lbs.
*47698	30" x 60"	679 lbs.	396 lbs.	51.5 lbs.
*47991	30" x 60" w/ 6 legs	679 lbs.	420 lbs.	52.5 lbs.
*47699	30" x 72"	750 lbs.	396 lbs.	56.4 lbs.
*47992	30" x 72" w/ 6 legs	750 lbs.	430 lbs.	57.5 lbs.



All Stainless – Undershelves For Equipment Stand

Item	Dimensions	Load Capacity
47677	30" x 12" For Equipment Stand 47691	300 lbs.
47678	30" x 15" For Equipment Stand 47692	300 lbs.
47679	30" x 18" For Equipment Stand 47693	300 lbs.
47680	30" x 24" For Equipment Stand 47694	300 lbs.
47995	30" x 60" For Equipment Stand 47991 with 6 Legs	500 lbs.
47996	30" x 72" For Equipment Stand 47992 with 6 Legs	500 lbs.



47995

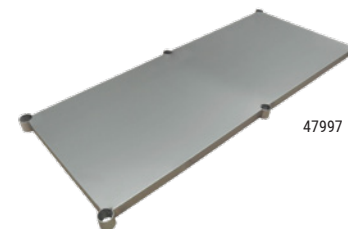


Equipment Stands Comes With 6 Legs

- 430 Stainless steel construction (18 gauge)
- Galvanized legs and undershelf
- Adjustable feet
- Table height is 24"
- Lip size is 1 1/2"



Item	Description	Loading Capacity	Weight	Undershelf Capacity
*47993	30" x 60"	600 lbs.	75 lbs.	520 lbs.
*47994	30" x 72"	680 lbs.	84 lbs.	530 lbs.



47997

Galvanized - Undershelf For Equipment Stand

Item	Description	Dimensions	Loading Capacity
47997	30 X 60 For Equipment Stand 47993	24.4" x 55.7" x 1.96"	370 lbs.
47998	30 X 72 For Equipment Stand 47994	24.4" x 67.7" x 1.96"	390 lbs.

Wooden Adjustable Cutting Board For Equipment Stand

- Hardwood maple cutting board top shelf

Item	Compatible With	Dimensions
47564	Equipment Stands #22057	10" X 24" x 1 1/4"
47565	Equipment Stands #22058	10" X 30" x 1 1/4"
47566	Equipment Stands #22059	10" X 36" x 1 1/4"
47567	Equipment Stands #22060	10" X 48" x 1 1/4"
47568	Equipment Stands #22061	10" X 60" x 1 1/4"
47569	Equipment Stands #22062	10" X 72" x 1 1/4"



Wooden cutting board attached to the equipment stand

Equipment Filler Tables

- 340 Stainless steel top shelf with 4" back splash
- 18 Gauge Galvanized undershelf, hat channel, leg and socket
- plastic bullet foot

Item	Description	Backsplash	Loading Capacity	Weight	Undershelf Capacity
46513	30" x 12" x 34"	4" (38" max height)	420 lbs.	27 lbs.	300 lbs.
46514	30" x 15" x 34"	4" (38" max height)	420 lbs.	30 lbs.	300 lbs.
46515	30" x 18" x 34"	4" (38" max height)	420 lbs.	33 lbs.	300 lbs.
46516	30" x 24" x 34"	4" (38" max height)	450 lbs.	38 lbs.	330 lbs.



Stainless Steel Worktables With Open Base, 3-Sided Leg Brace

- 18 Gauge, 430 Stainless Steel table top
- 18 Gauge Galvanized leg, socket, hat channel and "U" shape leg brace
- Aluminum socket
- Plastic bullet feet

Item	Dimensions	Load Capacity	Height
28628	SS with Leg Brace 24" X 24"	400 lbs.	34"
28629	SS with Leg Brace 24" X 30"	450 lbs.	34"
28630	SS with Leg Brace 24" X 36"	500 lbs.	34"
28631	SS with Leg Brace 24" X 48"	600 lbs.	34"
*28632	SS with Leg Brace 24" X 60"	700 lbs.	34"
28633	SS with Leg Brace 30" X 48"	700 lbs.	34"
*28634	SS with Leg Brace 30" X 60"	800 lbs.	34"
*28635	SS with Leg Brace 30" X 72"	900 lbs.	34"





TABLES AND STORAGE SOLUTION



All Stainless Steel Worktables With Stainless Steel Undershelves

- 20 Gauge 430 Stainless Steel top with 4" backplash
- 20 Gauge 430 Stainless Steel undershelf and hat channel

- Stainless steel leg and socket
- Stainless steel bullet feet



Optional casters and extra shelves are available for all Stainless Steel & Standard Worktables.

All Stainless Steel Worktable

Item	Dimensions	Load Capacity	Height
19135	All SS Table 24" x 24"	827 lbs.	34"
19136	All SS Table 24" x 30"	904 lbs.	34"
19137	All SS Table 24" x 36"	981 lbs.	34"
19138	All SS Table 24" x 48"	1058 lbs.	34"
*19139	All SS Table 24" x 60"	1102 lbs.	34"
*19140	All SS Table 24" x 72"	1146 lbs.	34"
*26044	All SS Table 24" x 84"	1411 lbs.	34"
*19141	All SS Table 24" x 96"	1510 lbs.	34"
19142	All SS Table 30" x 30"	992 lbs.	34"
19143	All SS Table 30" x 36"	1080 lbs.	34"
19144	All SS Table 30" x 48"	1157 lbs.	34"
*19145	All SS Table 30" x 60"	1190 lbs.	34"
*19146	All SS Table 30" x 72"	1235 lbs.	34"
*26045	All SS Table 30" x 84"	1499 lbs.	34"
*19147	All SS Table 30" x 96"	1598 lbs.	34"

All Stainless Steel Worktables Comes With 6 Legs And Stainless Steel Undershelves

Item	Dimensions	Load Capacity	Height
*45154	All SS Table 24" x 108"	1120 lbs.	34"
*45155	All SS Table 30" x 108"	1240 lbs.	34"

All Stainless Steel Worktables With 4" Backsplash

Item	Dimensions	Load Capacity	Height
44335	All SS Table 24" x 24" with 4" backplash	794 lbs.	38"
44336	All SS Table 24" x 30" with 4" backplash	882 lbs.	38"
44337	All SS Table 24" x 36" with 4" backplash	948 lbs.	38"
44338	All SS Table 24" x 48" with 4" backplash	1025 lbs.	38"
*44339	All SS Table 24" x 60" with 4" backplash	1058 lbs.	38"
*44340	All SS Table 24" x 72" with 4" backplash	1102 lbs.	38"
*44341	All SS Table 24" x 84" with 4" backplash	1367 lbs.	38"
*44342	All SS Table 24" x 96" with 4" backplash	1466 lbs.	38"
44343	All SS Table 30" x 30" with 4" backplash	948 lbs.	38"
44344	All SS Table 30" x 36" with 4" backplash	1036 lbs.	38"
44345	All SS Table 30" x 48" with 4" backplash	1113 lbs.	38"
*44346	All SS Table 30" x 60" with 4" backplash	1146 lbs.	38"
*44347	All SS Table 30" x 72" with 4" backplash	1190 lbs.	38"
*44348	All SS Table 30" x 84" with 4" backplash	1455 lbs.	38"
*44349	All SS Table 30" x 96" with 4" backplash	1554 lbs.	38"

All Stainless Steel Undershelves For The All Stainless Steel Worktables

Item	Dimensions	Load Capacity
21607	24" x 24" SS Undershelf for 19135 and 44335	364 lbs.
21608	24" x 30" SS Undershelf for 19136 and 44336	397 lbs.
21609	24" x 36" SS Undershelf for 19137 and 44337	441 lbs.
21610	24" x 48" SS Undershelf for 19138 and 44338	474 lbs.
*21611	24" x 60" SS Undershelf for 19139 and 44339	485 lbs.
*21612	24" x 72" SS Undershelf for 19140 and 44340	507 lbs.
*21613	24" x 84" SS Undershelf for 26044 and 44341	617 lbs.
*21614	24" x 96" SS Undershelf for 19141 and 44342	672 lbs.
21615	30" x 30" SS Undershelf for 19142 and 44343	419 lbs.
21616	30" x 36" SS Undershelf for 19143 and 44344	463 lbs.
21617	30" x 48" SS Undershelf for 19144 and 44345	496 lbs.
*21618	30" x 60" SS Undershelf for 19145 and 44346	507 lbs.
*21619	30" x 72" SS Undershelf for 19146 and 44347	529 lbs.
*21620	30" x 84" SS Undershelf for 26045 and 44348	639 lbs.
*21621	30" x 96" SS Undershelf for 19147 and 44349	694 lbs.



website: www.omcan.com
email: sales@omcan.com
call: 1.800.465.0234
fax: 905.607.0234



Limited quantities available. Prices valid to authorized Omcan Dealers only. Special prices on this flyer may not be included to any special freight program. E&OE. Prices will be subject to change as per exchange rates.

NOT APPLICABLE TO PRIOR PURCHASE.

PRICES MAY BE SUBJECT TO INCREASE ON SOME ITEMS DUE TO NEW AND FUTURE TARIFF TAXES POLICIES

All prices are DEALER'S NET



Stainless Steel Worktables With Rolled Die Cast Leg Clamps



- 18 Gauge 430 Stainless Steel top with galvanized legs
- Support Channels are secured via bolt and acorn style nut
- The Galvanized Under-shelf has Rolled Die Cast Leg Clamps
- Legs are secured by single set screw design
- Plastic Bullet Feet

Optional casters and extra shelves are available for All Stainless Steel & Standard Worktables.

Stainless Steel Worktables

Item	Dimensions	Load Capacity	Height
17577	SS Table 24" x 24"	827 lbs.	34"
17578	SS Table 24" x 30"	904 lbs.	34"
17579	SS Table 24" x 36"	992 lbs.	34"
17580	SS Table 24" x 48"	1069 lbs.	34"
*17581	SS Table 24" x 60"	1102 lbs.	34"
*17582	SS Table 24" x 72"	1146 lbs.	34"
*20198	SS Table 24" x 84"	1411 lbs.	34"
*18854	SS Table 24" x 96"	1510 lbs.	34"
17584	SS Table 30" x 30"	992 lbs.	35.75"
17585	SS Table 30" x 36"	1080 lbs.	35.75"
*17586	SS Table 30" x 48"	1157 lbs.	35.75"
*17587	SS Table 30" x 60"	1190 lbs.	35.75"
*17588	SS Table 30" x 72"	1235 lbs.	35.75"
*20434	SS Table 30" x 84"	1499 lbs.	35.75"
*18855	SS Table 30" x 96"	1598 lbs.	35.75"



Rolled Die Cast Leg Clamps

Stainless Steel Worktables With 4" Backsplash

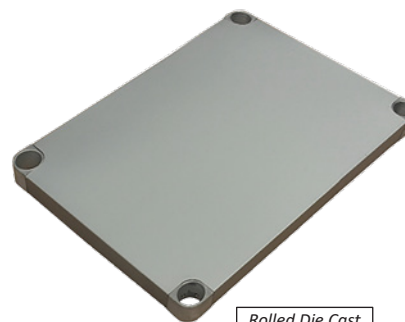
Item	Dimensions	Backsplash	Load Capacity	Height
23793	24" x 24"	4"	794 lbs.	38"
23794	24" x 30"	4"	882 lbs.	38"
23795	24" x 36"	4"	948 lbs.	38"
23796	24" x 48"	4"	1025 lbs.	38"
*23797	24" x 60"	4"	1058 lbs.	38"
*23798	24" x 72"	4"	1102 lbs.	38"
*23799	24" x 84"	4"	1367 lbs.	38"
*23800	24" x 96"	4"	1466 lbs.	38"
23801	30" x 30"	4"	948 lbs.	38"
23802	30" x 36"	4"	1036 lbs.	38"
23803	30" x 48"	4"	1113 lbs.	38"
*23804	30" x 60"	4"	1146 lbs.	38"
*23805	30" x 72"	4"	1190 lbs.	38"
*23806	30" x 84"	4"	1455 lbs.	38"
*23807	30" x 96"	4"	1554 lbs.	38"



Rolled Die Cast Leg Clamps

Galvanized Undershelves For The Elite Series Worktables

Item	Dimensions	Compatible With	Load Capacity
17614	24" x 24"	17577 and 23793	342 lbs.
17615	24" x 30"	17578 and 23794	375 lbs.
17616	24" x 36"	17579 and 23795	419 lbs.
17617	24" x 48"	17580 and 23796	452 lbs.
*17618	24" x 60"	17581 and 23797	463 lbs.
*17619	24" x 72"	17582 and 23798	485 lbs.
*17620	24" x 84"	20198 and 23799	595 lbs.
*17621	24" x 96"	18854 and 23800	650 lbs.
17622	30" x 30"	17584 and 23801	397 lbs.
17623	30" x 36"	17585 and 23802	441 lbs.
17624	30" x 48"	17586 and 23803	474 lbs.
*17625	30" x 60"	17587 and 23804	485 lbs.
*17626	30" x 72"	17588 and 23805	507 lbs.
*17627	30" x 84"	20434 and 23806	617 lbs.
*17628	30" x 96"	18855 and 23807	672 lbs.



Rolled Die Cast Leg Clamps



Standard Series Worktables

Stainless Steel Worktables

Item	Dimensions	Load Capacity	Height
24196	SS Table 18" x 24"	220 lbs.	34"
47719	SS Table 18" x 30"	265 lbs.	34"
47720	SS Table 18" x 36"	265 lbs.	34"
47721	SS Table 18" x 48"	287 lbs.	34"
*47722	SS Table 18" x 60"	331 lbs.	34"
*47723	SS Table 18" x 72"	331 lbs.	34"
*47724	SS Table 18" x 84"	353 lbs.	34"
*47725	SS Table 18" x 96"	375 lbs.	34"
43182	SS Table 24" x 18"	220 lbs.	34"
22063	SS Table 24" x 24"	485 lbs.	34"
22064	SS Table 24" x 30"	529 lbs.	34"
22065	SS Table 24" x 36"	573 lbs.	34"
22066	SS Table 24" x 48"	606 lbs.	34"
*22067	SS Table 24" x 60"	650 lbs.	34"
*22068	SS Table 24" x 72"	705 lbs.	34"
*22069	SS Table 24" x 84"	1036 lbs.	34"
*22070	SS Table 24" x 96"	1102 lbs.	34"
43183	SS Table 30" x 18"	265 lbs.	34"
22071	SS Table 30" x 30"	551 lbs.	34"
22072	SS Table 30" x 36"	595 lbs.	34"
22073	SS Table 30" x 48"	639 lbs.	34"
*22074	SS Table 30" x 60"	679 lbs.	34"
*22075	SS Table 30" x 72"	750 lbs.	34"
*22076	SS Table 30" x 84"	1091 lbs.	34"
*22077	SS Table 30" x 96"	1157 lbs.	34"

Stainless Steel Worktables With 4" Backsplash

Item	Dimensions	Backsplash	Load Capacity	Height
22078	24" x 24"	4"	485 lbs.	38"
22079	24" x 30"	4"	529 lbs.	38"
22080	24" x 36"	4"	573 lbs.	38"
22081	24" x 48"	4"	606 lbs.	38"
*22082	24" x 60"	4"	650 lbs.	38"
*22083	24" x 72"	4"	705 lbs.	38"
*22084	24" x 84"	4"	1036 lbs.	38"
*22085	24" x 96"	4"	1102 lbs.	38"
22086	30" x 30"	4"	551 lbs.	38"
22087	30" x 36"	4"	595 lbs.	38"
22088	30" x 48"	4"	639 lbs.	38"
*22089	30" x 60"	4"	679 lbs.	38"
*22090	30" x 72"	4"	750 lbs.	38"
*22091	30" x 84"	4"	1091 lbs.	38"
*22092	30" x 96"	4"	1157 lbs.	38"

Galvanized Undershelves For Standard Worktables

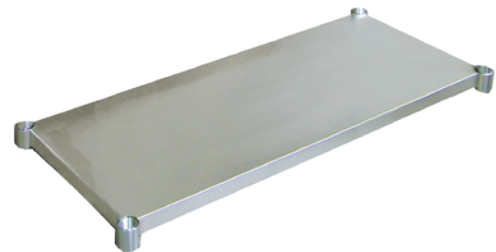
Item	Dimensions	Compatible With	Load Capacity
48210	18" x 24"	24196	176 lbs.
48211	18" x 30"	47719	220 lbs.
48212	18" x 36"	47720	220 lbs.
48213	18" x 48"	47721	231 lbs.
*48214	18" x 60"	47722	265 lbs.
*48215	18" x 72"	47723	265 lbs.
*48216	18" x 84"	47724	276 lbs.
*48217	18" x 96"	47725	287 lbs.
44291	24" x 18"	43182	176 lbs.
22093	24" x 24"	22063 and 22078	298 lbs.
22094	24" x 30"	22064 and 22079	331 lbs.
22095	24" x 36"	22065 and 22080	331 lbs.
22096	24" x 48"	22066 and 22081	364 lbs.
*22097	24" x 60"	22067 and 22082	397 lbs.
*22098	24" x 72"	22068 and 22083	397 lbs.
*22099	24" x 84"	22069 and 22084	430 lbs.
*22100	24" x 96"	22070 and 22085	463 lbs.

- 18 Gauge 430 Stainless Steel top with galvanized legs
- Support Channels secured via bolt and acorn style nut
- The Galvanized Under-shelf designed with welded V pipe leg supports
- Legs secured by single set-screw design
- Plastic Bullet Feet



Optional casters and extra shelves are available for All Stainless Steel & Standard Worktables.

Welded Stainless Steel Tables available by request.
Please call for more information.



Galvanized Undershelves For Standard Worktables

Item	Dimensions	Compatible With	Load Capacity
44292	30" x 18"	43183	220 lbs.
22101	30" x 30"	22071 and 22086	331 lbs.
22102	30" x 36"	22072 and 22087	364 lbs.
22103	30" x 48"	22073 and 22088	364 lbs.
*22104	30" x 60"	22074	397 lbs.
*22105	30" x 72"	22075 and 22090	397 lbs.
*22106	30" x 84"	22076 and 22091	452 lbs.
*22107	30" x 96"	22077 and 22092	485 lbs.



TABLE ACCESSORIES AND SINKS



Bullet Feet and Caster/Wheel For All Worktables

Worktables located on pages 7 and 8

Bullet Feet

Item	Description
39313	Stainless Steel Bullet Foot
23510	Plastic Bullet Foot (Replacement)
23520	Bullet Foot- Plastic Inside Stainless Steel Outside



Work Table Wheel

Item	Description
14395	Work Table Wheel (with Brakes) 5" Dia x 1 1/4" Thick



Galvanized Leg Braces For 24" / 30" Worktable

Replaces undershelf to convert into sitting table or for storage use under the table.



Item	Description
38035	Leg brace for work table 24" x 48"
38036	Leg brace for work table 24" x 60"
38037	Leg brace for work table 24" x 72"
39033	Leg brace for work table 24" x 84"
39034	Leg brace for work table 24" x 96"

Item	Description
39384	Leg brace for work table 30" x 48"
39385	Leg brace for work table 30" x 60"
39386	Leg brace for work table 30" x 72"
39387	Leg brace for work table 30" x 84"
39388	Leg brace for work table 30" x 96"

Drawers For 24" / 30" Worktable



Item	Description
24578	24" deep work tables
24579	30" deep work tables

All Stainless Steel Table With Sink And 6" Backsplash

- 18 Gauge, 430 Stainless steel top shelf with 6" backsplash
- 18 Gauge, 430 Stainless steel undershelf and hat channel
- Stainless steel leg and socket; stainless steel bullet foot
- Aluminum corner bracket on undershelf
- 3.5" drain basket included
- Low lead deck-mounted faucet FD-4-10LL included



Left Sink

Item	Dimensions	Sink Dimensions (LxWxH)	Table Load Capacity	Height
New 49174	24" x 48" x 34"	14"l X 16"w X 10"h	420 lbs.	40"
44259	24" x 60" x 34"	14"l X 16"w X 10"h	1089 lbs.	40"
44301	24" x 72" x 34"	14"l X 16"w X 10"h	1133 lbs.	40"
New 49176	30" x 48" x 34"	16"l X 20"w X 10"h	440 lbs.	40"
43231	30" x 60" x 34"	16"l X 20"w X 10"h	1177 lbs.	40"
43239	30" x 72" x 34"	16"l X 20"w X 10"h	1221 lbs.	40"

Right Sink

Item	Dimensions	Sink Dimensions (LxWxH)	Table Load Capacity	Height
New 49175	24" x 48" x 34"	14"l X 16"w X 10"h	420 lbs.	40"
44300	24" x 60" x 34"	14"l X 16"w X 10"h	1089 lbs.	40"
44302	24" x 72" x 34"	14"l X 16"w X 10"h	1133 lbs.	40"
New 49177	30" x 48" x 34"	16"l X 20"w X 10"h	440 lbs.	40"
43238	30" x 60" x 34"	16"l X 20"w X 10"h	1177 lbs.	40"
43240	30" x 72" x 34"	16"l X 20"w X 10"h	1221 lbs.	40"

Left Sink



Right Sink



New Stainless Steel Undershelf For 24" & 30" Tables

Item	Dimensions	Load Capacity	Compatible With
44166	21.2" x 45.3" x 1.8"	451 lbs	49175 / 49174
46908	21.2" x 57.3" x 1.8"	462 lbs	44259 / 44300
46917	21.2" x 69.3" x 1.8"	486 lbs	44301 / 44302
44167	27.2" x 45.3" x 1.8"	473 lbs	49177 / 49176
46918	27.2" x 57.3" x 1.8"	484 lbs	43231 / 43238
46919	27.2" x 69.3" x 1.8"	506 lbs	43239 / 43240

New



Stainless Steel Table With Sink And 6" Backsplash With Galvanized Legs

Left Sink

Item	Dimensions	Sink Dimensions (LxWxH)	Table Load Capacity	Height
43241	30" x 60" x 34"	16"l X 20"w X 10"h	1150 lbs.	40"
43243	30" x 72" x 34"	16"l X 20"w X 10"h	1200 lbs.	40"

Right Sink

Item	Dimensions	Sink Dimensions (LxWxH)	Table Load Capacity	Height
43242	30" x 60" x 34"	16"l X 20"w X 10"h	1150 lbs.	40"
43244	30" x 72" x 34"	16"l X 20"w X 10"h	1200 lbs.	40"

- 18GA.430S/S top shelf with 6" backsplash
- 18GA.304S/S 1 tub:14"X16"X10"D welded at left on top shelf
- 18 GA. Galvanized undershelf and hat channel
- Galvanized leg and socket; plastic steel bullet foot
- Aluminum corner bracket on undershelf
- 3.5" drain basket included
- Low lead deck-mounted faucet FD-4-10LL included



website: www.omcan.com
email: sales@omcan.com
call: 1.800.465.0234
fax: 905.607.0234

Limited quantities available. Prices valid to authorized Omcan Dealers only. Special prices on this flyer may not be included to any special freight program. E&OE. Prices will be subject to change as per exchange rates.

NOT APPLICABLE TO PRIOR PURCHASE.

PRICES MAY BE SUBJECT TO INCREASE ON SOME ITEMS DUE TO NEW AND FUTURE TARIFF TAXES POLICIES

All prices are DEALER'S NET





Stainless Steel Folding Table

With Undershelf (Snap On, Removable Undershelf)

Item	Description	Loading Capacity	Dimensions
41234	With undershelf 24" x 60"	280 kg / 616 lbs	24" x 60" x 30.63"
41235	With undershelf 24" x 72"	295 kg / 649 lbs	24" x 72" x 30.63"
41236	With undershelf 30" x 60"	310 kg / 682 lbs	30" x 60" x 30.63"
41237	With undershelf 30" x 72"	280 kg / 616 lbs	30" x 72" x 30.63"



Folding table with undershelf



Without Undershelf

Item	Description	Loading Capacity	Dimensions
41230	Without undershelf 24" x 60"	240 kg / 528 lbs	24" x 60" x 30.63"
41231	Without undershelf 24" x 72"	260 kg / 572 lbs	24" x 72" x 30.63"
41232	Without undershelf 30" x 60"	275 kg / 605 lbs	30" x 60" x 30.63"
41233	Without undershelf 30" x 72"	250 kg / 550 lbs	30" x 72" x 30.63"



Folding table without undershelf



Cabinet Base For Countertop Gas Ranges

- 16-gauge • 430 stainless steel top and body • Open top and front • Stainless steel leg and socket
- Stainless steel bullet feet • Fully welded

Item	Description	Dimensions
43838	Cabinet Base for Gas Equipment #43730, 43734, 43727, 43017	25" X 24" X 25"
44229	Cabinet Base for Gas Equipment #43731, 43735, 43728, 43018	25" x 36" x 25"



43838

44229



Meat Grinder Table

Item	Description	Dimensions
37961	Stainless Steel Knock-down Meat Grinder Worktable with 15" back splash and 15" side splash	31" x 31" x 20"



37961



Stainless Steel Wall Shelves

- 18 gauge 430 stainless steel
- The shelf is supported by two/three triangular brackets



SS Wall Shelves



Item	Dimensions	Load Capacity	Number Of Brackets
22108	12" x 24"	209 lbs.	2
22109	12" x 36"	231 lbs.	2
22110	12" x 48"	253 lbs.	2
22111	12" x 60"	286 lbs.	2
30455	12" x 72"	286 lbs.	3
48574	12" x 84"	440 lbs.	3
46508	14" x 24"	242 lbs.	2
46509	14" x 36"	275 lbs.	2
46510	14" x 48"	308 lbs.	2
46511	14" x 60"	352 lbs.	2
48575	14" x 72"	450 lbs.	3
48576	14" x 84"	480 lbs.	3
24409	16" x 36"	308 lbs.	2
24410	16" x 48"	352 lbs.	2
24411	16" x 60"	418 lbs.	2
48577	16" x 72"	480 lbs.	3
48578	16" x 84"	500 lbs.	3

Wall-Mounted Stainless Steel Slant Rack Shelves With Drain

- 18 gauge 304 stainless steel



Item	Description (WDH)
28489	21" x 22.5" x 14.25"
28490	42" x 22.5" x 14.25"
47298	63" x 22.5" x 14.25"
47299	72" x 22.5" x 14.25"



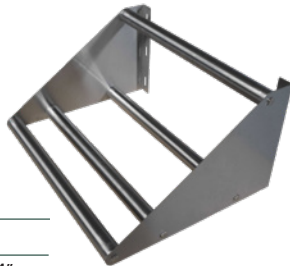
28490

Tubular Rack Shelf

- 16 gauge 430 stainless steel



Item	Description	Dimensions
44619	36" Wide	15" x 36" x 11 1/4"
44620	48" Wide	15" x 48" x 11 1/4"
44621	60" Wide	15" x 60" x 11 1/4"



Stainless Steel Microwave Shelves

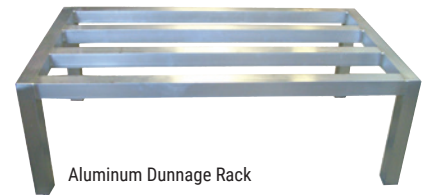
- 18 gauge 430 stainless steel



Item	Dimensions
40212	20" x 24"
40213	20" x 30"



Aluminum Dunnage Racks



Aluminum Dunnage Rack

Item	Description	Capacity	Weight
22125	20" x 36" x 12"	1600 lbs.	7 lbs.
22126	20" x 48" x 12"	1600 lbs.	9 lbs.
*22127	20" x 60" x 12"	1600 lbs.	11 lbs.

Stainless Steel Pot Racks



With Shelf

Item	Description
31851	12" x 36" with 7 pc Hooks
31852	12" x 48" with 9 pc Hooks
31853	12" x 60" with 11 pc Hooks

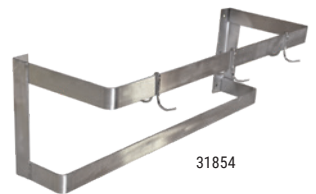


31851



With Wall-Mounted Pot Rack

ITEM	DESCRIPTION
31854	36" with 3 pc Plated Pot Hooks
31855	48" with 4 pc Plated Pot Hooks
31856	60" with 5 pc Plated Pot Hooks



31854



8 Hooks Stainless Steel Rack

Item	Description	Load Capacity
44541	Hook Rack 48" x 3"	2 lbs. each hook



44541



Stainless Steel Overshelf With Double Tier

- Adjustable Lower Shelf
- Double Tier
- Stainless Steel Post and Socket



ITEM	DESCRIPTION	DIMENSIONS
23988	4 Post and Socket	14" x 48" x 32"
*23989	4 Post and Socket	14" x 60" x 32"
*23990	6 Post and Socket	14" x 72" x 32"



Stainless Steel Overshelf With Single Tier

- 18 gauge 430 stainless steel



ITEM	DIMENSIONS
44616	12" x 48" x 18"
*44617	12" x 60" x 18"
*44618	12" x 72" x 18"



Stainless Steel Overshelf With Double Tier For Prep Tables



15" Depth

Item	Dimensions	Compatible W/ Prep Table
48298	15" x 37" x 33"	50034
48299	15" x 47" x 33"	50046
*48300	15" x 60" x 33"	50047
*48198	15" x 71" x 33"	50048

18" Depth

Item	Dimensions	Compatible W/ Prep Table
48301	18" x 50" x 33"	50042
*48302	18" x 71" x 33"	50043
*48303	18" x 92" x 33"	50044

Floor Trough With Stainless Steel Grating



ITEM	DIMENSIONS
44608	12" x 36"
44609	12" x 48"
44610	12" x 60"
44611	12" x 72"



Floor Trough Drain With Stainless Steel Grating Bar



ITEM	DIMENSIONS
44612	18" x 18"



Open Wall Cabinet

- 18 gauge 340 stainless steel



ITEM	DESCRIPTION	LOAD CAPACITY
46408	15" x 36" x 32.5"	360 lbs.
46409	15" x 48" x 32.5"	380 lbs.
46410	15" x 60" x 32.5"	400 lbs.



Stainless Steel Dish Cabinet

- 18-Gauge Stainless steel dish cabinets
- 304 Stainless steel top, walls, bottom and hat channel
- Centered channel on each shelf
- 1 5/8" x 6" stainless steel leg, socket and bullet feet



ITEM	DIMENSIONS	WEIGHT
38029	15"D x 48"W x 36"H	99.2 lbs
38030	15"D x 60"W x 36"H	154.3 lbs
38031	15"D x 72"W x 36"H	188.5 lbs.
38032	18"D x 48"W x 36"H	119.1 lbs
38033	18"D x 60"W x 36"H	185.2 lbs
38034	18"D x 72"W x 36"H	252.4 lbs.



Step Ladder

- Step Dimensions: 15.75" x 9.75"
- 2 Steps, Step Dimensions: 15.75" x 9.75"
- Distance Between Steps: 10.75"
- Wheel Diameter: 2"
- Dimensions: 20.5" x 15.5" x 39.5"

Item	Description
31368	All Steel and Heavy Duty



New Bubble Tea Station

- 6" Backsplash
- 15" x 15" x 10" (2x) Sinks
- Drainage Panels & Overshelves
- 16-Gauge 304 stainless steel construction
- 20" x 12" x 15" drop-in ice bin with sliding cover
- Swing doors



Item	Dimensions
48405	72" x 30" x 34" (58" with overshelf)



Aluminum Keg Rack



ITEM	DESCRIPTION	DIMENSIONS
44613	4 Keg	20" x 42" x 76 3/8"
44614	6 Keg	20" x 60" x 76 3/8"
44615	8 Keg	20" x 72" x 76 3/8"





Shelves



Chrome Stock Shelves



Item	Dimensions
20098	14" x 24"
20099	14" x 30"
20100	14" x 36"
20101	14" x 42"
20102	14" x 48"
20103	14" x 54"
*20104	14" x 60"
*20105	14" x 72"

Item	Dimensions
20106	18" x 24"
20107	18" x 30"
20108	18" x 36"
20109	18" x 42"
20110	18" x 48"
20111	18" x 54"
*20112	18" x 60"
*20113	18" x 72"

Item	Dimensions
24226	21" x 24"
24227	21" x 30"
24228	21" x 36"
24229	21" x 42"
24230	21" x 48"
24231	21" x 54"
*24232	21" x 60"
*24233	21" x 72"

Item	Dimensions
20114	24" x 24"
20115	24" x 30"
20116	24" x 36"
20117	24" x 42"
20118	24" x 48"
20119	24" x 54"
*20120	24" x 60"
*20121	24" x 72"

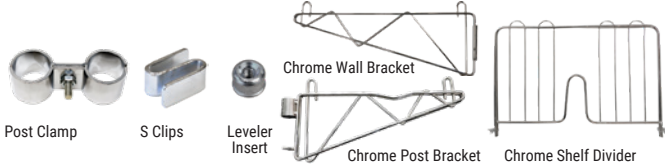
Complete Chrome Shelving Kit

- (4pc.) Size Shelves
- (4 set) 72" Posts
- (16pc.) Clips
- (4pc.) Levelers



Item	Dimension	Description
45164	18" x 36" x 72"	(4pc.) 18" x 36" shelves
45165	18" x 48" x 72"	(4pc.) 18" x 48" shelves
45166	18" x 60" x 72"	(4pc.) 18" x 60" shelves
45167	24" x 36" x 72"	(4pc.) 24" x 36" shelves
45168	24" x 48" x 72"	(4pc.) 24" x 48" shelves
*45169	24" x 60" x 72"	(4pc.) 24" x 60" shelves

Chrome Accessories



Item	Description
24827	Post Clamp for Chrome Wire Shelving
19752	S clips to connect shelves Chrome
14463	Leveler Insert for Chrome Wire Shelving
24249	14" Wall Bracket Chrome
24250	18" Wall Bracket Chrome
47509	21" Wall Bracket Chrome
24251	24" Wall Bracket Chrome
24255	14" Pressure Fit Shelf Divider Chrome
24256	18" Pressure Fit Shelf Divider Chrome
48733	14" Post Bracket Single Chrome
48734	18" Post Bracket Single Chrome
48735	21" Post Bracket Single Chrome
48736	24" Post Bracket Single Chrome

Chrome Posts With/Without Leveler

Capacity: Under 48" in length, up to 850 lbs./shelf
Over 48" in length, up to 600 lbs./shelf



with Leveler



without Leveler

Chrome Post With Leveler

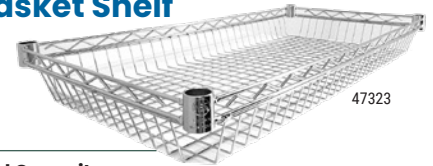
Item	Description
47682	8" with Leveler
20091	13" with Leveler
20092	34" with Leveler
20093	54" with Leveler
20094	64" with Leveler
20095	72" with Leveler
20096	74" with Leveler
20097	84" with Leveler

Chrome Post Without Leveler

Item	Description
31375	34" without Leveler
31376	54" without Leveler
31377	64" without Leveler
31378	72" without Leveler
31379	74" without Leveler
31380	84" without Leveler

Ideal with Caster (14460 or 14461) or Foot Plate (24829)

Chrome Wire Basket Shelf



47323

Item	Dimension	Load Capacity
47323	18" x 36"	850 lbs.
47324	18" x 48"	600 lbs.

Chrome Wire Wine Shelf



48222

Item	Dimension	Load Capacity
48222	18" x 36"	850 lbs.
48394	18" x 48"	600 lbs.

Other Accessories For Both Chrome And Epoxy



Item	Description
14460	5" Industrial Caster without brakes (Chrome & Epoxy)
14461	5" Industrial Caster with brakes (Chrome & Epoxy)
18307	Black abs sleeves (4 / bag)
14462	End Cap
14464	Leveler Bolt (set of 4)
24829	Foot Plate For Wire Shelving

website: www.omcan.com
email: sales@omcan.com
call: 1.800.465.0234
fax: 905.607.0234

Limited quantities available. Prices valid to authorized Omcan Dealers only. Special prices on this flyer may not be included to any special freight program. E&OE. Prices will be subject to change as per exchange rates.

NOT APPLICABLE TO PRIOR PURCHASE.

PRICES MAY BE SUBJECT TO INCREASE ON SOME ITEMS DUE TO NEW AND FUTURE TARIFF TAXES POLICIES

All prices are DEALER'S NET





Slanted Merchandising Shelves

27° Angle Chrome Stock Shelves



Item	Dimensions
48741	18" x 24"
48742	18" x 36"
48743	18" x 48"
48744	24" x 36"
48745	24" x 48"
48746	24" x 60"
*48747	24" x 72"

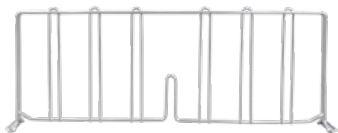
Pressure Fit Shelf Divider



Chrome

Item	Dimensions
48748	14" x 4"
48749	18" x 4"

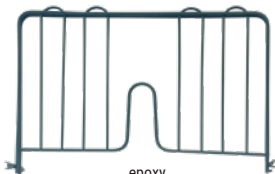
chrome



Epoxy

Item	Dimensions
48750	14" x 4"
48751	18" x 4"

epoxy



Clear Label Holder

25 pcs/pack



48752

Item	Dimensions
48752	3" x 1 1/4"
48753	6" x 1 1/4"



48753

3-Sided Shelving Frame



Chrome

Item	Dimensions
48754	18" x 24" for 48741
48755	18" x 36" for 48742
48756	18" x 48" for 48743
48757	24" x 36" for 48744
48758	24" x 48" for 48745
48759	24" x 60" for 48746
*48760	24" x 72" for 48747



Shelves

Black Epoxy Stock Shelves



Item	Dimensions
48094	18" x 36"
48095	18" x 48"
*48096	18" x 60"

Item	Dimensions
48097	24" x 36"
48098	24" x 48"
*48099	24" x 60"



Black Epoxy Posts With Leveler

Capacity:
Under 48" in length, up to 850 lbs./shelf
Over 48" in length, up to 600 lbs./shelf



Black Epoxy Post With Leveler

Item	Description
48090	64" with Leveler
48091	72" with Leveler
48092	74" with Leveler
48093	84" with Leveler



with Leveler

Stainless Steel Solid Shelves

Material: 304 Stainless Steel
Load Capacity: max 450 lbs



Item	Dimensions
49134	18" x 36"
49135	18" x 48"
*49136	18" x 60"
49137	24" x 36"
49138	24" x 48"
49139	24" x 60"
49140	24" x 72"



Shelves



Green Epoxy Stock Shelves



Item	Dimensions
20127	14" x 24"
20128	14" x 30"
20129	14" x 36"
20130	14" x 42"
20131	14" x 48"
20132	14" x 54"
*20133	14" x 60"
*20134	14" x 72"

Item	Dimensions
20135	18" x 24"
20136	18" x 30"
20137	18" x 36"
20138	18" x 42"
20139	18" x 48"
20140	18" x 54"
*20141	18" x 60"
*20142	18" x 72"

Item	Dimensions
24234	21" x 24"
24235	21" x 30"
24236	21" x 36"
24237	21" x 42"
24238	21" x 48"
24239	21" x 54"
*24240	21" x 60"
*24241	21" x 72"

Item	Dimensions
20143	24" x 24"
20144	24" x 30"
20145	24" x 36"
20146	24" x 42"
20147	24" x 48"
20148	24" x 54"
*20149	24" x 60"
*20150	24" x 72"

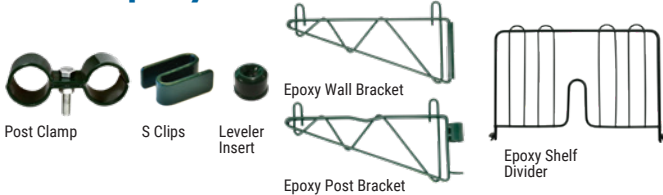
Complete Green Epoxy Shelving Kit

- (4pc.) Size Shelves
- (4 set) 72" Posts
- (16pc.) Clips
- (4pc.) Levelers



Item	Dimension	Description
45170	18" x 36" x 72"	(4pc.) 18" x 36" shelves
45171	18" x 48" x 72"	(4pc.) 18" x 48" shelves
45172	18" x 60" x 72"	(4pc.) 18" x 60" shelves
45173	24" x 36" x 72"	(4pc.) 24" x 36" shelves
45174	24" x 48" x 72"	(4pc.) 24" x 48" shelves
*45175	24" x 60" x 72"	(4pc.) 24" x 60" shelves

Green Epoxy Accessories



Item	Description
24828	Post Clamp for Epoxy Wire Shelving
19974	S clips to connect shelves Epoxy
20061	Leveler Insert for Epoxy Wire Shelving
24252	14" Wall Bracket Epoxy
24253	18" Wall Bracket Epoxy
47508	21" Wall Bracket Epoxy
24254	24" Wall Bracket Epoxy
24257	14" Pressure Fit Shelf Divider Epoxy
24258	18" Pressure Fit Shelf Divider Epoxy
48737	14" Post Bracket Single Epoxy
48738	18" Post Bracket Single Epoxy
48739	21" Post Bracket Single Epoxy
48740	24" Post Bracket Single Epoxy

Green Epoxy Posts with/without Leveler

Capacity:
Under 48" in length, up to 850 lbs./shelf
Over 48" in length, up to 600 lbs./shelf



Green Epoxy Post with Leveler

Item	Description
47683	8" with Leveler
23637	13" with Leveler
16787	34" with Leveler
20123	54" with Leveler
20124	64" with Leveler
20125	72" with Leveler
23638	74" with Leveler
20126	84" with Leveler

Green Epoxy Post without Leveler

Item	Description
31369	34" without Leveler
31370	54" without Leveler
31371	64" without Leveler
31372	72" without Leveler
31373	74" without Leveler
31374	84" without Leveler

Ideal with Caster (14460 or 14461) or Foot Plate (24829)

Green Epoxy Wire Basket Shelf



Item	Dimension	Load Capacity
47325	18 x 36	850 lbs.
47326	18 x 48	600 lbs.

Other Accessories For Both Chrome And Epoxy



Item	Description
14460	5" Industrial Caster without brakes (Chrome & Epoxy)
14461	5" Industrial Caster with brakes (Chrome & Epoxy)
18307	Black abs sleeves (4 / bag)
14462	End Cap
14464	Leveler Bolt (set of 4)
24829	Foot Plate For Wire Shelving



Mobile Work Bench With Drawers

- Made of 430 anti-fingerprint stainless steel
- Comes with drawers
- Rubberized wood top
- Ball bearing drawer slide
- Aluminum drawer with handle
- 6" caster (2 swivel, 2 swivel with brake)
- Drawer liner included
- Key included

48592



40463



48593



Item	Description	Dimensions
48592	48" Workbench with 4 Drawers + 1 Door	48" x 18" x 37.4"
40463	56" Workbench with 10 Drawers	55" x 18" x 37.4"
48593	72" Workbench with 15 Drawers	72" x 18" x 37.4"

Mobile Security Cage Chrome Panels Only

- * Wire Shelving kit and casters not included and sold separately

Material: Carbon Steel with chrome plating

Item	Dimensions
44540	48" x 24" x 61"
48431	60" x 24" x 61"



Wire Shelf Cart

- Chrome plated
- Double handle
- 3-tier
- With 4 caster (2 with brake)

Item	Dimensions
49141	18" x 36"
49142	24" x 48"

Handle

- Chrome plated

Item	Dimensions
49143	18"
49144	24"



Meat Slicer Table With Slider

- 430 SS removable flat top shelf
- 16GA Aluminum tubing



Item	Dimensions
44722	29" x 20.5" x 30"



Mobile Food Preparation Table/Cart

Mobile table / cart / trolley with 20" x 30" maple wood serving top and stainless steel shelves

Item	Dimensions
41516	32" x 20" x 35" (holder & handle included)



Mobile Receiving Desk

- Fabricated in stainless steel
- Equipped with a lockable storage compartment
- Additional bottom storage and casters
- Built for convenience
- Assembly required

Item	13511
Description	Mobile receiving desk with undershelf and 5" Dia. casters
Net Dimensions	24.25" x 22.50" x 53"
Gross Dimensions	25" x 37" x 11"
Net Weight	57 lbs.



43470



Item	*43470
Description	Mobile receiving desk with two lockable storage compartment and 4" Dia. casters
Net Dimensions	57 lbs.
Gross Dimensions	24" x 25" x 59"
Net Weight	111 lbs.



POT SINKS

- Comes with drain guards
- Stainless steel
- Gauge: 18
- Drain size: 1.5" corner drain
- Drain size: 3.5" center drain
- conforms to CSA & NSF standards
- 16GA galvanized legs
- Shipped with legs removed
- Leg braces optional (please see below)



ONE TUB SINKS WITH CORNER AND CENTER DRAIN

18" X 18" X 11"	Overall WxDxH	Weight	Corner Drain	Centre Drain
With two drain boards	54" x 23 1/2" x 44"	69 lbs.	25249	43759
With left drain board	38 1/2" x 23 1/2" x 44"	60 lbs.	25247	43760
With right drain board	38 1/2" x 23 1/2" x 44"	60 lbs.	25248	43762
With no drain board	23" x 23 1/2" x 44"	32 lbs.	22112	43761
18" X 21" X 14"	Overall WxDxH	Weight	Corner Drain	Centre Drain
With two drain boards	54" x 26 1/2" x 44"	71 lbs.	25265	43774
With left drain board	38 1/2" x 26 1/2" x 44"	62 lbs.	25263	43771
With Right drain board	38 1/2" x 26 1/2" x 44"	62 lbs.	25264	43773
With no drain board	23" x 26 1/2" x 44"	53 lbs.	25262	43772
20" X 20" X 12"	Overall WxDxH	Weight	Corner Drain	Centre Drain
With no drain board	25" x 25" x 44"	27 lbs.	N/A	43072
24" X 24" X 14"	Overall WxDxH	Weight	Corner Drain	Centre Drain
With two drain boards	72" x 29 1/2" x 44"	89 lbs.	25255	43785
With left drain board	50 1/2" x 29 1/2" x 44"	75 lbs.	25253	41855
With right drain board	50 1/2" x 29 1/2" x 44"	75 lbs.	25254	43784
With no drain board	29" x 29 1/2" x 44"	45 lbs.	22118	43783



OneTub Sink
with Two
Drain Boards



OneTub Sink
with Left Drain Board

TWO TUB SINKS WITH CORNER AND CENTER DRAIN

18" X 18" X 11"	Overall WxDxH	Weight	Corner Drain	Centre Drain
With two drain boards	72" x 23 1/2" x 44"	97 lbs.	25252	43767
With left drain board	56 1/2" x 23 1/2" x 44"	88 lbs.	25250	43768
With right drain board	56 1/2" x 23 1/2" x 44"	88 lbs.	25251	43770
With no drain board	41" x 23 1/2" x 44"	55 lbs.	22113	43769
18" X 21" X 14"	Overall WxDxH	Weight	Corner Drain	Centre Drain
With two drain boards	72" x 26 1/2" x 44"	95 lbs.	25269	43782
With left drain board	56 1/2" x 26 1/2" x 44"	86 lbs.	25267	43779
With right drain board	56 1/2" x 26 1/2" x 44"	86 lbs.	25268	43781
With no drain board	41" x 26 1/2" x 44"	77 lbs.	25266	43780
24" X 24" X 14"	Overall WxDxH	Weight	Corner Drain	Centre Drain
With two drain boards	96" x 29 1/2" x 44"	120 lbs.	25258	43793
With left drain board	74 1/2" x 29 1/2" x 44"	106 lbs.	25256	43790
With right drain board	74 1/2" x 29 1/2" x 44"	106 lbs.	25257	43792
With no drain board	53" x 29 1/2" x 44"	80 lbs.	22119	43791



TwoTub Sink
with No Drain Boards



Three Tub Sink
with Two Drain Boards

THREE TUB SINKS WITH CORNER AND CENTER DRAIN

18" X 18" X 11"	Overall WxDxH	Weight	Corner Drain	Centre Drain
With two drain boards	90" x 23 1/2" x 44"	95 lbs.	22117	43763
With left drain board	75" x 23 1/2" x 44"	80 lbs.	22115	43764
With right drain board	75" x 23 1/2" x 44"	80 lbs.	22116	43766
With no drain board	59" x 23 1/2" x 44"	75 lbs.	22114	43765
18" X 21" X 14"	Overall WxDxH	Weight	Corner Drain	Centre Drain
With two drain boards	90" x 26 1/2" x 44"	119 lbs.	25273	43778
With left drain board	74 1/2" x 26 1/2" x 44"	112 lbs.	25271	43775
With right drain board	74 1/2" x 26 1/2" x 44"	112 lbs.	25272	43777
With no drain board	59" x 26 1/2" x 44"	102 lbs.	25270	43776
24" X 24" X 14" (4 Faucet Holes)	Overall WxDxH	Weight	Corner Drain	Centre Drain
With two drain boards	120" x 29 1/2" x 44"	150 lbs.	25261	43789
With left drain board	98 1/2" x 29 1/2" x 44"	136 lbs.	25259	43786
With right drain board	98 1/2" x 29 1/2" x 44"	136 lbs.	25260	43788
With no drain board	77" x 29 1/2" x 44"	110 lbs.	22120	43787



Three Tub Sink
with No Drain Boards



Stainless Steel Space Saver Sinks

- Comes with drain guards
- Stainless steel
- Gauge: 18
- Drain size: 1.5" corner drain
- Drain size: 3.5" center drain
- conforms to CSA & NSF standards
- 16GA galvanized legs
- Shipped with legs removed
- Leg braces optional (please see below)



Three Tub Sinks With Corner And Center Drain

10" X 14" X 10"	Dimensions	Corner Drain	Centre Drain
16" Two Drain Boards	62" x 19.5" x 43.75"	39764	43756
16" Left Drain Board	48.63" x 19.50" x 43.75"	39762	43755
16" Right Drain Board	48.63" x 19.50" x 43.75"	39763	43757
With No Drain Board	35.12" x 19.50" x 43.75"	39761	43758

Stainless Steel Removable Drain Board

Item	Description
21142	for 18" x 18" sink
23326	for 18" x 21" sink
21143	for 24" x 24" sink



Corner Drain Guard For Corner Drain Sink Only

Item	Description
23323	Swirl Guard



Budget Sink

- 18GA 430 stainless steel
- Galvanized leg and socket
- Plastic bullet feet
- Drain Size: 3.5"



Item	22121
Description	18" X 18" X 13" Sink with 3.5" Center Drain Basket and 8.75" Backsplash
Dimensions	21" x 21.5" x 41"
Weight	36.3 lbs.



Three Compartment Corner Sink



Item	18" X 18" X 14"	Overall Dimensions	Weight
43073	Three compartment corner sink with center drain, 2 drainboards	18"D x 18"W x 14"H	79 lbs

Leg Brace For Single Tub Sinks

Item	Description
21135	for 18" x 18"
31484	for 18" x 21"
21139	for 24" x 24"



Double Tub Sinks

Item	Description
21136	for 18" x 18"
31485	for 18" x 21"
21140	for 24" x 24"



Triple Tub Sinks

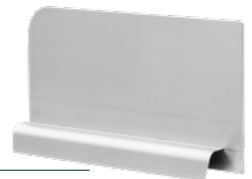
Item	Description
21137	for 18" x 18"
31486	for 18" x 21"
21141	for 24" x 24"



Splash Guard For Pot Sinks

Material: 304 SS / 18-Gauge

Item	Dimensions	Description	Orientation
47727	21 15/16" x 11"	For 18" x 18" Pot Sinks	Left
47728	21 15/16" x 11"	For 18" x 18" Pot Sinks	Right
47729	23 15/16" x 11"	For 20" x 20" Pot Sinks	Left
47730	23 15/16" x 11"	For 20" x 20" Pot Sinks	Right
47731	24 15/16" x 11"	For 18" x 21" Pot Sinks	Left
47732	24 15/16" x 11"	For 18" x 21" Pot Sinks	Right
47733	27 15/16" x 11"	For 24" x 24" Pot Sinks	Left
47734	27 15/16" x 11"	For 24" x 24" Pot Sinks	Right



Laundry Sink With Faucet And Drain Basket

- 16-gauge, 304 stainless steel



Item	Dimensions
44593	24" x 21.45" x 33.16"





Stainless Steel Drop In Sinks – One Tub



Item	Description	Dimensions	Weight
39778	9" x 9" x 5" One tub Drop in sink with flat top and 3.5" drain basket	12" x 14" x 5"	4 lbs
39779	10" x 14" x 5" One tub Drop in sink with flat top and 3.5" drain basket	13" x 19" x 5"	5.1 lbs
39780	10" x 14" x 10" One tub Drop in sink with flat top and 3.5" drain basket	13" x 19" x 10"	8.8 lbs
39781	14" x 10" x 5" One tub Drop in sink with flat top and 3.5" drain basket	17" x 15" x 5"	2.7 lbs
39784	12.5" x 10.25" x 5.5" One tub Drop in sink top with self-rimmed edge and 3.5" drain basket	15" x 15" x 5.5"	5.7 lbs
39785	10" x 14" x 5" One tub Drop in sink with 6" Left-Back-Right splash and 3.5" drain basket	13" x 19" x 5"	9.5 lbs.
39786	10" x 14" x 10" One tub Drop in sink with 6" Left-Back-Right splash and 3.5" drain basket	13" x 19" x 5"	12.8 lbs.



Stainless Steel Drop In Sinks – Two And Three Tub Drop In Sink



Item	Description	Dimensions	Weight
39782	10" x 14" x 10" Two tub Drop in sink with flat top and 3.5" drain basket	25"D x 19"W x 10"H	16 lbs.
39783	10" x 14" x 10" Three tub Drop in sink with flat top and 3.5" drain basket	37"D x 19"W x 10"H	25 lbs.
44604	16" x 20" x 12" Triple Drop in Sink with flat top and 3.5" drain basket	25"D x 55"W x 12"H	53.7 lbs.





Stainless Steel Hand Sinks – Standard Models

Made of high 20 gauge quality stainless steel. Comes with a 6 1/2" backsplash and mounting brackets.
Also available with side splashes.



Item	Description	Bowl LxWxH	Weight	Dimensionsxh
*44585	Fabricated Hand Sink with 4" Gooseneck Faucet and Drain Basket	10" x 12" x 5"	12 lbs.	15.25" x 17" x 13.5"
*44586	Fabricated Hand Sink with Side Splashes, 4" Gooseneck Faucet and Drain Basket	10" x 14" x 5"	14 lbs.	13" x 17" x 15.25"
*46507	Fabricated Hand Sink with 4" Gooseneck Faucet and Drain Basket	9" x 9" x 5"	10 lbs.	16" x 12" x 13"
*46582	Fabricated Stainless Steel Wall Mounted Hand Sink With Two Holes			
14337	Drain plug for hand sink			
31282	Replacement hot cartridge for 22122 and 43034			
31283	Replacement cold cartridge for 22122 and 43034			
46888	Faucet for fabricated hand sink #44585 #44586			
44743	Replacement cartridge pair (hot and cold) for #46888, 44585, 44586, 46507, 44583			



44585



44586



46507



46582



14337

Stainless Steel Sinks With Knee Valves

•Hand sink with faucet
•Made of high quality 20 and 18 gauge stainless steel
•Also available with side splashes



14337



28680



27174



21123

Item	Description	Bowl LxWxH	Weight	Dimensions (DWH)
*46319	Fabricated Hand Sink with Knee Valve Assembly	14" x 10" x 5"	22.9 lbs.	15.2" x 18" x 14"
*46512	Hand sink with knee valve assembly and side splashes	14" x 10" x 5"	25 lbs.	14" x 18" x 15.2"
46583	Hand sink with one hole			
21123	Knee Valve Assembly			
27174	Splash Mounted Faucet One Hole With 8" Spout for 46319 and 46512			
14337	Drain plug for hand sink			
28680	Replacement hot or cold cartridge for 23518, 23332, 27173, 23521			



46319



46512



46583

Stainless Steel Pedestal Sinks

•Made of high quality 16 gauge stainless steel
•Comes with a 7.75" backsplash and 34" pedestal
•Also available with side splashes



Item	Description	Bowl LxWxH	Weight	Dimensions (DWH)
23515	Pedestal sink	16"x 13.75"x 5.75"	50 lbs.	13.75"x 18"x 41.75"
27180	Pedestal sink with side splashes	16"x 13.75"x 5.75"	50 lbs.	13.75"x 18"x 41.75"

Item	Description
23521	Stainless Steel Foot Valve
28680	Replacement hot or cold cartridge for 23518, 23332, 27173, 23521



23515



27180



23521



28680

website: www.omcan.com
email: sales@omcan.com
call: 1.800.465.0234
fax: 905.607.0234



Limited quantities available. Prices valid to authorized Omcan Dealers only. Special prices on this flyer may not be included to any special freight program. E&OE. Prices will be subject to change as per exchange rates.

NOT APPLICABLE TO PRIOR PURCHASE.

PRICES MAY BE SUBJECT TO INCREASE ON SOME ITEMS DUE TO NEW AND FUTURE TARIFF TAXES POLICIES

All prices are DEALER'S NET



Ice Bin

- 1" Drain size
- Included plastic bottle holder
- 20-gauge 304 stainless steel bowl, top, back and body
- Galvanized leg and socket, plastic bullet feet and "U" shape leg bracing
- 18-gauge 430 stainless steel hat channel, back, side, bottom and intermediate shelf
- 3" high backsplash



Item	Dimensions
43475	24" x 18.5" x 33"
43476	36" x 18.5" x 33"

Product might not be exactly as shown



Bar Drain Board

- 18-gauge 304 stainless steel drainboard, sides, front and back, open base
- Galvanized leg and socket, plastic bullet feet
- 1" lps drain tubing
- 3" back-splash



Item	Dimensions
43472	18" x 24" x 33"



Product might not be exactly as shown

Insulated Ice Bin

- Post-mix aluminum cold plate with stainless steel tubing circuits
- 20-gauge 304 stainless steel bowl, top, back and body
- Galvanized leg and socket, plastic bullet feet and "U" shape leg bracing
- 3" high backsplash



Item	Dimensions
43477	18.5"D x 24"W x 33"H
43478	18.5"D x 36"W x 33"H

Product might not be exactly as shown



Under Bar Sinks



Item	10" X 14" X 10" Compartment Size	Overall Dimensions DXWXH	Weight
44600	1 compartment with no drain boards	18 3/4" x 14.5" x 33"	35.2 lbs.
44601	3 compartments with no drain boards	18 3/4" x 38.5" x 33"	57.2 lbs.
25274	3 compartments with two drain boards	18 3/4" x 60" x 37"	77 lbs.
44627	3 compartments with two drain boards	18 3/4" x 70" x 33"	83.6 lbs.
44603	4 compartments with two drain boards	18 3/4" x 72" x 33"	85.8 lbs.

44601

Product might not be exactly as shown



Sliding Covers

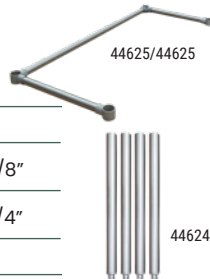
- 18-gauge 304 stainless steel material

Item	Description	Dimensions
44622	23.5" Sliding Cover for 43475 and 43477 Ice Bins	16.5" x 23.5"
44623	35.5" Sliding Cover for 43476 and 43478 Ice Bins	16.5" x 35.5"



Stainless Steel Leg And Leg Brace For Ice Bins

Item	Leg Brace For	Dimensions
44625	18" x 24" Ice Bins (43475 and 43477)	13 3/4" x 19 5/8"
44626	18" x 36" Ice Bins (43476 and 43478)	31 5/8" x 13 3/4"
44624	14" (43475 / 43476 / 43477 / 43478)	



Stainless Steel Corrugated Top Glass Rack Storage

- 18-gauge 304 stainless steel material
- 1" drain size



Item	Dimensions (DWH)
44596	23" x 24" x 33"



Stainless Steel Flat Top Glass Rack Storage

- 18-gauge 304 stainless steel material
- 1" drain size



Item	Dimensions (DWH)
44595	23" x 24" x 33"



Blender Station

- 18-gauge 304 stainless steel recessed step, backsplash, dump sink, sides and hat channel, open back and bottom
- Galvanized leg and socket, plastic bullet feet
- 1" lps drain included
- 9" x 9" x 4" dump sink
- 3" backsplash



Item	Dimensions (DWH)
43473	15" x 23" x 30"

Product might not be exactly as shown



Liquor Display Rack

- 18-gauge 304 stainless steel bottom, back, sides, hat channel and 5-tiered step
- 16-gauge 304 stainless steel 2" high strap
- Galvanized leg and socket, plastic bullet foot
- 6" high backsplash



Item	Dimensions (DWH)
43479	25" x 24" x 36"

Product might not be exactly as shown





Ice Bin With 2 Holders

- 1" Drain size
- Included plastic bottle holder
- 20-gauge 304 stainless steel bowl, top, back and body
- 3" high backsplash



Item	Dimensions
47519	24" x 29" x 33"
47520	36" x 29" x 33"



Stainless Steel Liquor Display Rack With 3" Backsplash

- 18-gauge 304 stainless steel bowl, top, back and body
- 3" high backsplash



Item	Dimensions
47522	24" x 29" x 33"
47523	12" x 29" x 33"



12" Blender Station With Backsplash And Faucet

- 18-gauge 304 stainless steel bowl, top, back and body
- 3" high backsplash



Item	Dimensions
47521	12" x 29" x 33"



Wall Mounted Mop Sink Faucet

Item	Descriptions
47502	Wall Mounted Mop Sink Faucet With 6 1/2" Swing Spout, 8" Centers

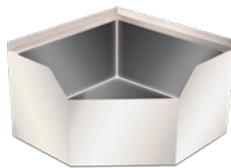


Corner Mop Sink With Drain Basket

- 16-gauge 304 stainless steel
- drain pipe size 2.36" (drain pipe excluded)



Item	Overall Dimensions
47470	26.5" x 26.5" x 16"

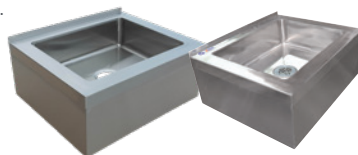


Stainless Steel Mop Sink With Drain Basket

Made of high quality 16 gauge stainless steel.
Drain Pipe Size: 3" PVC or Cast Iron



44605
44606
44607



24412

Item	Bowl Dimensions (DWH)	Dimensions (DWH)
24412	16" x 20" x 6"	21" x 25.25" x 11"
44605	20" x 28" x 6"	25" x 33" x 10"
44606	16" x 20" x 12"	21" x 25" x 16"
44607	20" x 28" x 12"	25" x 33" x 16"

Stainless Steel Cocktail Mix Unit

Comes with sliding cover for ice bin and speed rail



Item	Overall Dimensions	Sink Dimensions	Back Splash	Ice Bin Dimensions
48138	48" x 24" x 37"	10" x 12" x 10"	7"	20" x 12" x 10"
48618	36" x 24" x 37"	10" x 12" x 10"	7"	32" x 12" x 10"
48619	60" x 24" x 37"	10" x 12" x 10"	7"	44" x 12" x 10"

Hand Sink Cabinet Stand With Faucet

Water Pipe, 2-Door Storage, Storage Tray

- All Stainless steel
- Drain hose, faucet, water pipe, bottle opener
- 2 Doors cabinet 3.5 cu.ft (0.1m3)
- Storage tray



Item	47961
Material	Stainless Steel
Caster	x2- 3" fixed x2-3" locking swivel
Dimensions	32" x 26" x 37.9"
Assembly Required	YES



Portable Hand Sink With Backsplash And Water Heater Tank And Pump



Item	46788
Water Tank Capacity	2 x 18.9 L / 5 Gal
Waste Tank Capacity	2 x 28.4 L / 7.5 Gal
Water Heater Tank Capacity	7.6 L / 2 Gal
Electrical	110-120V/60Hz/1Ph
Amps	11.85 A
Fabricated Bowl	12" x 14" x 6"
Weight	69.5 lb. / 31.5 kg.
DxWxH	25.3" x 34.4" x 38.3"



46788

Hand Sink With Combined Floor Mop Sink

- Low lead gooseneck faucet
- 1.5" drain basket
- 3.5" drain basket for mop sink



Item	47246
Bowl Dimensions (DWH)	Hand Sink: 14" x 10" x 5.38 Mop Sink: 15" x 13" x 6"
Dimensions (DWH)	15.31" x 17" x 34" (8" with Backsplash)



47246



SINKS AND ACCESSORIES



Soiled Dish Tables



With Single Sink

SINK: 20" x 20" x 8"

Left Side

Item	Width	Overall Dimensions
28480	26"	30.37" x 26" x 44"
28482	36"	30.37" x 36" x 44"
28484	48"	30.37" x 48" x 44"
28486	60"	30.37" x 60" x 44"
47748	72"	30.37" x 72" x 44"

With Single Sink

Right Side

Item	Width	Overall Dimensions
28481	26"	30.37" x 26" x 44"
28483	36"	30.37" x 36" x 44"
28485	48"	30.37" x 48" x 44"
28487	60"	30.37" x 60" x 44"
47747	72"	30.37" x 72" x 44"

With Two Sinks

SINK: (2x) 20" x 20" x 12"

Left Side

Item	Width	Overall Dimensions
48485	72"	72" x 30" x 44"
48487	84"	84" x 30" x 44"
48489	96"	96" x 30" x 44"
48491	108"	108" x 30" x 44"
48493	120"	120" x 30" x 44"

With Two Sinks

Right side

Item	Width	Overall Dimensions
48486	72"	72" x 30" x 44"
48488	84"	84" x 30" x 44"
48490	96"	96" x 30" x 44"
48492	108"	108" x 30" x 44"
48494	120"	120" x 30" x 44"

With Three Sinks

SINK: (3x) 20" x 20" x 12"

Left Side

Item	Width	Overall Dimensions
48495	72"	72" x 30" x 44"
48497	84"	84" x 30" x 44"
48499	96"	96" x 30" x 44"
48501	108"	108" x 30" x 44"
48503	120"	120" x 30" x 44"

With Three Sinks

Right Side

Item	Width	Overall Dimensions
48496	72"	72" x 30" x 44"
48498	84"	84" x 30" x 44"
48500	96"	96" x 30" x 44"
48502	108"	108" x 30" x 44"
48504	120"	120" x 30" x 44"



47747

Stainless Steel Pre-Rinse Basket

Our pre-rinse basket prevents food scraps from going into your sink drains. Made of stainless steel for durability.



28488

Item	Overall Dimensions
28488	19.5" x 19.5" x 5"



Stainless Steel Under Counter Dish Tables With Backsplash

Left Side

Item	Description
40189	48" left side under counter dish table
40191	60" left side under counter dish table

Right Side

Item	Description
40190	48" right side under counter dish table
40192	60" right side under counter dish table



40189



CLEAN DISH TABLES



*Stainless Steel legs

Left Side

Item	Width
28472	26"
28474	36"
28476	48"
28478	60"
47746	72"

Right Side

Item	Width
28473	26"
28475	36"
28477	48"
28479	60"
47745	72"



47745



47746

Replacement Leg Brace For Soiled/Clean/Undercounter Dish Table

*Stainless Steel legs

Item	Description
47688	15" Leg Brace 28480 / 28481 / 40189 / 40190 / 40191 / 40192
47689	24" Leg Brace 28484 / 28485 / 28486 / 28487 / 28472 / 28473 / 28474 / 28475 / 28476 / 28477 / 28478 / 28479



47688

Replacement Leg For Soiled/Clean/Undercounter Dish Table (2 Pcs/Set)

*Stainless Steel

Item	Description	Compatible with Item
47704	25" Leg for item	28480 / 28481 / 40189 / 40190 / 40191 / 40192
47705	33" Leg for item	28484 / 28485 / 28486 / 28487 / 28472 / 28473 / 28474 / 28475 / 28476 / 28477 / 28478 / 28479



47704

website: www.omcan.com
email: sales@omcan.com
call: 1.800.465.0234
fax: 905.607.0234



Limited quantities available. Prices valid to authorized Omcan Dealers only. Special prices on this flyer may not be included to any special freight program. E&OE. Prices will be subject to change as per exchange rates.

NOT APPLICABLE TO PRIOR PURCHASE.

PRICES MAY BE SUBJECT TO INCREASE ON SOME ITEMS DUE TO NEW AND FUTURE TARIFF TAXES POLICIES

All prices are DEALER'S NET



Goose-Neck Faucets

Item	Description
22289	Goose-neck faucet for tub sinks
37869	Replacement hot cartridge for 22289
37870	Replacement cold cartridge for 22289

Deck-Mounted Sinks Faucets

Item	Description
39787	Deck mounted 4" centers with 3.5" goose neck spout faucet for drop in sinks
39788	Deck mounted 4" centers with 9" goose neck spout faucet for drop in sinks
44719	Deck mounted 4" centers with 10" long spout faucet for #44604
31282	Replacement hot cartridge for 23703, 39787, 39788 and 26085
31283	Replacement cold cartridge for 23703, 39787, 39788 and 26085

Splash Mounted Faucets

Item	Description
39254	8" centres, swing nozzle 6" spout
39255	8" centres, swing nozzle 8" spout
39256	8" centres, swing nozzle 10" spout
23516	8" centres, swing nozzle 12" spout
23517	8" centres, swing nozzle 14" spout
47819	8" centres, swing nozzle 16" spout
28491	Replacement hot cartridge for 27225, 39254, 39255, 39256, 23516 and 23517
28492	Replacement cold cartridge for 27225, 39254, 39255, 39256, 23516 and 23517

NSF Bar Sink Faucet

Item	Description
47820	Faucet for bar sink, swing nozzle, 6" spout
65875	Faucet for bar sink, swing nozzle, 8" spout
47821	Faucet for bar sink, swing nozzle, 10" spout
26085	Faucet for bar sink, swing nozzle, 12" spout

Faucet Hand Sink

Item	Description
46888	Faucet for fabricated hand sink #44585 #44586

Replacement Hot And Cold Cartridge

Item	Description
31282	Replacement hot cartridge for 23703, 39787, 39788 and 26085
31283	Replacement cold cartridge for 23703, 39787, 39788 and 26085

NSF Pre Rinse Assembly

Item	Description
22123	Pre-rinse assembly complete
22124	Pre-rinse assembly complete with faucet

Replacement Hot And Cold Cartridge

Item	Description
28680	Replacement hot and cold cartridge for 22123 and 22124

Pre Rinse Spray Valve Assembly

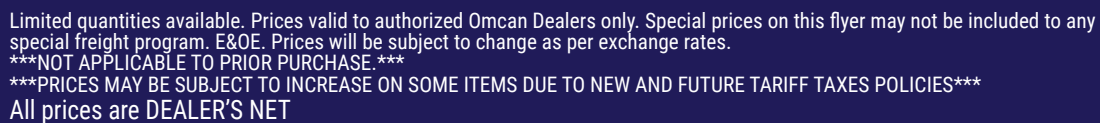
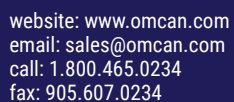
- Solid construction
- Flexible stainless steel hose
- Spray Valve
- Check valve prevents cross-flow
- Best used in food service, commercial kitchens and restaurants

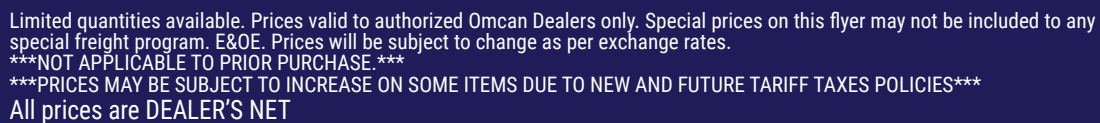
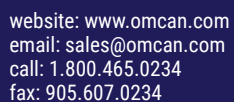
Item	Description
23518	Replacement Pre-rinse spray valve assembly



in f i X

All prices are DEALER'S NET







email: sales@omcan.com
call: 1.800.465.0234
web: www.omcan.com

