



2024



SPECIAL PROMOTION

- Cabinets
- Tables
- Shelves
- Sinks
- Storage
- Faucets
- And more

EXTENDED PROMO PRICING!



PROMO END: DECEMBER 31, 2024

Contact your account manager for more information.



email: sales@omcan.com
call: 1.800.465.0234
web: www.omcan.com





WORKTABLES WITH CABINETS



STAINLESS STEEL CABINET + 6" Backsplash + Sliding Doors + 6" legs

• 18 & 16 Gauge • 430 Stainless Steel • NSF approved

| ITEM | DESCRIPTION | OVERALL DIMENSIONS |
|-------|--------------------------------------|--------------------|
| 45281 | With 6" Backsplash and Sliding Doors | 30"D x 48"W x 36"H |
| 45282 | With 6" Backsplash and Sliding Doors | 30"D x 60"W x 36"H |
| 45283 | With 6" Backsplash and Sliding Doors | 30"D x 72"W x 36"H |

| ITEM | DESCRIPTION | OVERALL DIMENSIONS |
|-------|--------------------------------------|--------------------|
| 43480 | With 6" Backsplash and Sliding Doors | 24"D x 48"W x 36"H |
| 43481 | With 6" Backsplash and Sliding Doors | 24"D x 60"W x 36"H |
| 43482 | With 6" Backsplash and Sliding Doors | 24"D x 72"W x 36"H |



STAINLESS STEEL CABINET + Sliding Doors + 6" LEGS

• 18 & 16 Gauge • 430 Stainless Steel • NSF approved

| ITEM | DESCRIPTION | OVERALL DIMENSIONS |
|-------|---------------|--------------------|
| 44192 | Sliding Doors | 30"D x 48"W x 36"H |
| 44193 | Sliding Doors | 30"D x 60"W x 36"H |
| 44194 | Sliding Doors | 30"D x 72"W x 36"H |

| ITEM | DESCRIPTION | OVERALL DIMENSIONS |
|-------|---------------|--------------------|
| 44186 | Sliding Doors | 24"D x 48"W x 36"H |
| 44187 | Sliding Doors | 24"D x 60"W x 36"H |
| 44188 | Sliding Doors | 24"D x 72"W x 36"H |



STAINLESS STEEL CABINET + 6" Backsplash + Sliding Doors + drawers + 6" legs

• 18 & 16 Gauge • 430 Stainless Steel • NSF approved

| ITEM | DESCRIPTION | OVERALL DIMENSIONS |
|-------|---|--------------------|
| 45284 | With 6" Backsplash, Sliding Doors and Drawers | 30"D x 48"W x 36"H |
| 45285 | With 6" Backsplash, Sliding Doors and Drawers | 30"D x 60"W x 36"H |
| 45286 | With 6" Backsplash, Sliding Doors and Drawers | 30"D x 72"W x 36"H |

| ITEM | DESCRIPTION | OVERALL DIMENSIONS |
|-------|---|--------------------|
| 43483 | With 6" Backsplash, Sliding Doors and Drawers | 24"D x 48"W x 36"H |
| 43484 | With 6" Backsplash, Sliding Doors and Drawers | 24"D x 60"W x 36"H |
| 43485 | With 6" Backsplash, Sliding Doors and Drawers | 24"D x 72"W x 36"H |



STAINLESS STEEL CABINET + SLIDING DOORS + DRAWERS + 6" LEGS

• 18 & 16 Gauge • 430 Stainless Steel • NSF approved

| ITEM | DESCRIPTION | OVERALL DIMENSIONS |
|-------|---------------------------|--------------------|
| 44195 | Sliding Doors and Drawers | 30"D x 48"W x 36"H |
| 44196 | Sliding Doors and Drawers | 30"D x 60"W x 36"H |
| 44197 | Sliding Doors and Drawers | 30"D x 72"W x 36"H |

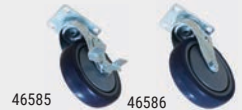
| ITEM | DESCRIPTION | OVERALL DIMENSIONS |
|-------|---------------------------|--------------------|
| 44189 | Sliding Doors and Drawers | 24"D x 48"W x 36"H |
| 44190 | Sliding Doors and Drawers | 24"D x 60"W x 36"H |
| 44191 | Sliding Doors and Drawers | 24"D x 72"W x 36"H |



5" DIA. CASTERS FOR WORKTABLES WITH CABINET, SLIDING DOOR AND DRAWERS

Only for Worktables Cabinet with 6" height legs

5" Diameter x 1 1/4" Thick



| ITEM | DESCRIPTION |
|-------|----------------|
| 46585 | with Brakes |
| 46586 | without Brakes |

STAINLESS STEEL KNOCK-DOWN WORKTABLES + SLIDING DOORS + 12" LEGS

• 18 Gauge • 430 and 304 Stainless Steel • Enclosed Cabinet with Sliding Doors • Plastic Bullet Feet • NSF approved

430 STAINLESS STEEL

| DESCRIPTION | HEIGHT | ITEM (Tables with Flush Edge) | ITEM (Tables with 3" Overhangs) |
|------------------------------|--------|-------------------------------|---------------------------------|
| 30" x 48" | 34" | 28639 (Flush edge) | 24397 (w/ 3" overhangs) |
| 30" x 60" | 34" | *28640 (Flush edge) | *24398 (w/ 3" overhangs) |
| 30" x 72" | 34" | *43721 (Flush edge) | *24399 (w/ 3" overhangs) |
| 30" x 48" with 4" Backsplash | 38" | 28642 (Flush edge) | 24403 (w/ 3" overhangs) |
| 30" x 60" with 4" Backsplash | 38" | *28643 (Flush edge) | *24404 (w/ 3" overhangs) |
| 30" x 72" with 4" Backsplash | 38" | *28644 (Flush edge) | *24405 (w/ 3" overhangs) |



28639



304 STAINLESS STEEL + 4" BACKSPASH + 3" OVERHANGS

| ITEM | DESCRIPTION | HEIGHT |
|-------|------------------------------|--------|
| 24400 | 30" x 48" | 34" |
| 24401 | 30" x 60" | 34" |
| 24402 | 30" x 72" | 34" |
| 24406 | 30" x 48" with 4" Backsplash | 38" |
| 24407 | 30" x 60" with 4" Backsplash | 38" |
| 24408 | 30" x 72" with 4" Backsplash | 38" |



24397



24403



website: www.omcan.com
email: sales@omcan.com
call: 1.800.465.0234
fax: 905.607.0234

All prices are SPECIAL NET CAD.
OFFER ENDS: AUGUST 31, 2024



Limited quantities available. Prices valid to authorized Omcan Dealers only. Special prices on this flyer may not be included to any special freight program. E&OE. Prices will be subject to change as per exchange rates.

NOT APPLICABLE TO PRIOR PURCHASE.



SOLID POLY-TOP TABLES FRAMES (BOARDS SOLD SEPARATELY)



| ITEM | DESCRIPTION | WEIGHT | DIMENSIONS |
|--------|-------------|-----------|--------------------|
| 40411 | 24" x 48" | 42 lbs. | 24"D x 48"W x 36"H |
| 41274 | 30" x 36" | 40.7 lbs. | 30"D x 36"W x 36"H |
| 41276 | 30" x 48" | 47.3 lbs. | 30"D x 48"W x 36"H |
| *41278 | 30" x 60" | 54 lbs. | 30"D x 60"W x 36"H |
| *41280 | 30" x 72" | 60.5 lbs. | 30"D x 72"W x 36"H |



Solid poly-Top Tables

POLY-TOP BOARDS (BOARDS SOLD SEPARATELY)

3/4" POLY-TOP BOARDS

| ITEM | DIMENSIONS |
|-------|---------------------|
| 43185 | 24"D x 48"W x 3/4"H |
| 43187 | 30"D x 36"W x 3/4"H |
| 43189 | 30"D x 48"W x 3/4"H |
| 43191 | 30"D x 60"W x 3/4"H |
| 43193 | 30"D x 72"W x 3/4"H |

1" POLY-TOP BOARDS

| ITEM | DIMENSIONS |
|-------|-------------------|
| 43186 | 24"D x 48"W x 1"H |
| 43188 | 30"D x 36"W x 1"H |
| 43190 | 30"D x 48"W x 1"H |
| 43192 | 30"D x 60"W x 1"H |
| 43194 | 30"D x 72"W x 1"H |



SOLID POLY-TOP TABLES WITH 6" BACKSPLASH (BOARDS SOLD SEPARATELY)



| ITEM | DESCRIPTION | WEIGHT | DIMENSIONS |
|--------|------------------------|-----------|--------------------|
| 41247 | 24" x 48" w/backsplash | 53 lbs. | 24"D x 48"W x 42"H |
| 41275 | 30" x 36" w/backsplash | 48.4 lbs. | 30"D x 36"W x 42"H |
| 41277 | 30" x 48" w/backsplash | 57.2 lbs. | 30"D x 48"W x 42"H |
| *41279 | 30" x 60" w/backsplash | 66 lbs. | 30"D x 60"W x 42"H |
| *41281 | 30" x 72" w/backsplash | 75 lbs. | 30"D x 72"W x 42"H |



Solid Poly-Top Tables with 6" Backsplash

POLY-TOP BOARDS FOR TABLE FRAME WITH 6" BACKSPLASH (BOARDS SOLD SEPARATELY)

3/4" POLY-TOP BOARDS

| ITEM | DIMENSIONS |
|-------|---------------------|
| 43195 | 20"D x 48"W x 3/4"H |
| 43197 | 26"D x 36"W x 3/4"H |
| 43199 | 26"D x 48"W x 3/4"H |
| 43201 | 26"D x 60"W x 3/4"H |
| 43203 | 26"D x 72"W x 3/4"H |

1" POLY-TOP BOARDS

| ITEM | DIMENSIONS |
|-------|-------------------|
| 43196 | 20"D x 48"W x 1"H |
| 43198 | 26"D x 36"W x 1"H |
| 43200 | 26"D x 48"W x 1"H |
| 43202 | 26"D x 60"W x 1"H |
| 43204 | 26"D x 72"W x 1"H |



ADDITIONAL UNDERSHELF FOR POLY-TOP TABLES (SOLD SEPARATELY)

| ITEM | DESCRIPTION | LOAD CAPACITY |
|-------|---|---------------|
| 44279 | Undershef for Item 40411 & 41247 (24" x 48") | 440 lbs. |
| 44280 | Undershef for Item 41274 & 41275 (30" x 36") | 440 lbs. |
| 44281 | Undershef for Item 41276 & 41275 (30" x 48") | 465 lbs. |
| 44282 | Undershef for items 41278 and 41279 (30" x 60") | 490 lbs. |
| 44245 | Undershef for items 41280 and 41281 (30" x 72") | 520 lbs. |



Undershef for poly-top table





EQUIPMENT STANDS

• 430 Stainless steel construction (18 gauge) • Galvanized legs and undershelf • Adjustable feet • Table height is 24" • Lip size is 1 1/2"



| ITEM | DESCRIPTION | LOADING CAPACITY | WEIGHT | UNDERSHELF CAPACITY |
|--------|-------------|------------------|---------|---------------------|
| 24185 | 30" x 12" | 460 lbs. | 31 lbs. | 350 lbs. |
| 24087 | 30" x 15" | 520 lbs. | 34 lbs. | 350 lbs. |
| 22056 | 30" x 18" | 600 lbs. | 36 lbs. | 400 lbs. |
| 22057 | 30" x 24" | 660 lbs. | 40 lbs. | 450 lbs. |
| 22058 | 30" x 30" | 750 lbs. | 47 lbs. | 450 lbs. |
| 22059 | 30" x 36" | 800 lbs. | 51 lbs. | 450 lbs. |
| 22060 | 30" x 48" | 860 lbs. | 62 lbs. | 500 lbs. |
| *22061 | 30" x 60" | 600 lbs. | 75 lbs. | 500 lbs. |
| *22062 | 30" x 72" | 680 lbs. | 84 lbs. | 500 lbs. |



UNDERSHELF FOR EQUIPMENT STAND

| ITEM | DESCRIPTION | DIMENSIONS | LOADING CAPACITY |
|-------|--|-----------------------|------------------|
| 47549 | Undershelf 30 X 12 For Equipment Stand 24185 | 24.4" x 10.2" x 1.96" | 230 lbs. |
| 47550 | Undershelf 30 X 15 For Equipment Stand 24087 | 24.4" x 10.6" x 1.96" | 260 lbs. |
| 47551 | Undershelf 30 X 18 For Equipment Stand 22056 | 24.4" x 13.6" x 1.96" | 280 lbs. |
| 47029 | Undershelf 30 X 24 For Equipment Stand 22057 | 24.4" x 19.7" x 1.96" | 290 lbs. |
| 47554 | Undershelf 30 X 30 For Equipment Stand 22058 | 24.4" x 25.6" x 1.96" | 300 lbs. |
| 47555 | Undershelf 30 X 36 For Equipment Stand 22059 | 24.4" x 31.7" x 1.96" | 330 lbs. |
| 46932 | Undershelf 30 X 48 For Equipment Stand 22060 | 24.4" x 43.7" x 1.96" | 350 lbs. |
| 47556 | Undershelf 30 X 60 For Equipment Stand 22061 | 24.4" x 55.7" x 1.96" | 370 lbs. |
| 47558 | Undershelf 30 X 72 For Equipment Stand 22062 | 24.4" x 67.7" x 1.96" | 390 lbs. |



New

EQUIPMENT STANDS - ALL STAINLESS STEEL



- 18-Gauge 430 Stainless Steel top shelf with 2" turn up on left-rear-right sides
- 18-Gauge 430 Stainless Steel Undershelf and 2 each hat channel
- Stainless Steel leg (4) and socket, plastic bullet foot with S/S clad

| ITEM | DESCRIPTION | LOAD CAPACITY | UNDERSHELF CAPACITY | NET WEIGHT |
|--------|---------------------|---------------|---------------------|------------|
| 47691 | 30" x 12" | 420 lbs. | 300 lbs. | 18.1 lbs. |
| 47692 | 30" x 15" | 420 lbs. | 300 lbs. | 22.8 lbs. |
| 47693 | 30" x 18" | 420 lbs. | 300 lbs. | 27.6 lbs. |
| 47694 | 30" x 24" | 420 lbs. | 330 lbs. | 32.4 lbs. |
| 47695 | 30" x 30" | 551 lbs. | 330 lbs. | 37.2 lbs. |
| 47696 | 30" x 36" | 595 lbs. | 363 lbs. | 42 lbs. |
| 47697 | 30" x 48" | 639 lbs. | 363 lbs. | 46.8 lbs. |
| *47698 | 30" x 60" | 679 lbs. | 396 lbs. | 51.5 lbs. |
| *47991 | 30" x 60" w/ 6 legs | 679 lbs. | 420 lbs. | 52.5 lbs. |
| *47699 | 30" x 72" | 750 lbs. | 396 lbs. | 56.4 lbs. |
| *47992 | 30" x 72" w/ 6 legs | 750 lbs. | 430 lbs. | 57.5 lbs. |



New

ALL STAINLESS - UNDERSHELVES FOR EQUIPMENT STAND

| ITEM | DIMENSIONS | LOAD CAPACITY |
|-------|---|---------------|
| 47677 | 30" x 12" For Equipment Stand 47691 | 300 lbs. |
| 47678 | 30" x 15" For Equipment Stand 47692 | 300 lbs. |
| 47679 | 30" x 18" For Equipment Stand 47693 | 300 lbs. |
| 47680 | 30" x 24" For Equipment Stand 47694 | 300 lbs. |
| 47995 | 30" x 60" For Equipment Stand 47991 with 6 Legs | 500 lbs. |
| 47996 | 30" x 72" For Equipment Stand 47992 with 6 Legs | 500 lbs. |



47995





TABLES AND STORAGE SOLUTION



New

EQUIPMENT STANDS COMES WITH 6 LEGS

- 430 Stainless steel construction (18 gauge)
- Galvanized legs and undershelf
- Adjustable feet
- Table height is 24"
- Lip size is 1 1/2"



| ITEM | DESCRIPTION | LOADING CAPACITY | WEIGHT | UNDERSHELF CAPACITY |
|--------|-------------|------------------|---------|---------------------|
| *47993 | 30" x 60" | 600 lbs. | 75 lbs. | 520 lbs. |
| *47994 | 30" x 72" | 680 lbs. | 84 lbs. | 530 lbs. |

GALVANIZED - UNDERSHELF FOR EQUIPMENT STAND

| ITEM | DESCRIPTION | DIMENSIONS | LOADING CAPACITY |
|-------|-----------------------------------|-----------------------|------------------|
| 47997 | 30 X 60 For Equipment Stand 47993 | 24.4" x 55.7" x 1.96" | 370 lbs. |
| 47998 | 30 X 72 For Equipment Stand 47994 | 24.4" x 67.7" x 1.96" | 390 lbs. |



47997

WOODEN ADJUSTABLE CUTTING BOARD FOR EQUIPMENT STAND

- Hardwood maple cutting board top shelf

| ITEM | COMPATIBLE WITH | DIMENSIONS |
|-------|-------------------------|--------------------|
| 47564 | Equipment Stands #22057 | 10" X 24" x 1 1/4" |
| 47565 | Equipment Stands #22058 | 10" X 30" x 1 1/4" |
| 47566 | Equipment Stands #22059 | 10" X 36" x 1 1/4" |
| 47567 | Equipment Stands #22060 | 10" X 48" x 1 1/4" |
| 47568 | Equipment Stands #22061 | 10" X 60" x 1 1/4" |
| 47569 | Equipment Stands #22062 | 10" X 72" x 1 1/4" |



Wooden cutting board attached to the equipment stand

EQUIPMENT FILLER TABLES

- 340 Stainless steel top shelf with 4" back splash • 18 Gauge Galvanized undershelf, hat channel, leg and socket • plastic bullet foot

| ITEM | DESCRIPTION | BACKSPLASH | LOADING CAPACITY | WEIGHT | UNDERSHELF CAPACITY |
|-------|-----------------|---------------------|------------------|---------|---------------------|
| 46513 | 30" x 12" x 34" | 4" (38" max height) | 420 lbs. | 27 lbs. | 300 lbs. |
| 46514 | 30" x 15" x 34" | 4" (38" max height) | 420 lbs. | 30 lbs. | 300 lbs. |
| 46515 | 30" x 18" x 34" | 4" (38" max height) | 420 lbs. | 33 lbs. | 300 lbs. |
| 46516 | 30" x 24" x 34" | 4" (38" max height) | 450 lbs. | 38 lbs. | 330 lbs. |



STAINLESS STEEL WORKTABLES WITH OPEN BASE, 3-SIDED LEG BRACE

- 18 Gauge, 430 Stainless Steel table top • 18 Gauge Galvanized leg, socket, hat channel and "U" shape leg brace • Aluminum socket • Plastic bullet feet

| ITEM | DIMENSIONS | LOAD CAPACITY | HEIGHT |
|--------|-----------------------------|---------------|--------|
| 28628 | SS with Leg Brace 24" X 24" | 400 lbs. | 34" |
| 28629 | SS with Leg Brace 24" X 30" | 450 lbs. | 34" |
| 28630 | SS with Leg Brace 24" X 36" | 500 lbs. | 34" |
| 28631 | SS with Leg Brace 24" X 48" | 600 lbs. | 34" |
| *28632 | SS with Leg Brace 24" X 60" | 700 lbs. | 34" |
| 28633 | SS with Leg Brace 30" X 48" | 700 lbs. | 34" |
| *28634 | SS with Leg Brace 30" X 60" | 800 lbs. | 34" |
| *28635 | SS with Leg Brace 30" X 72" | 900 lbs. | 34" |



website: www.omcan.com
 email: sales@omcan.com
 call: 1.800.465.0234
 fax: 905.607.0234

All prices are SPECIAL NET CAD.
 OFFER ENDS: AUGUST 31, 2024



Limited quantities available. Prices valid to authorized Omcan Dealers only. Special prices on this flyer may not be included to any special freight program. E&OE. Prices will be subject to change as per exchange rates.

NOT APPLICABLE TO PRIOR PURCHASE.



TABLES AND STORAGE SOLUTION



ALL STAINLESS STEEL WORKTABLES WITH STAINLESS STEEL UNDERSHELVES

- 20 Gauge 430 Stainless Steel top with 4" backsplash
- 20 Gauge 430 Stainless Steel undershelf and hat channel

- Stainless steel leg and socket
- Stainless steel bullet feet



Optional casters and extra shelves are available for all Stainless Steel & Standard Worktables.

ALL STAINLESS STEEL WORKTABLE

| ITEM | DIMENSIONS | LOAD CAPACITY | HEIGHT |
|--------|------------------------|---------------|--------|
| 19135 | All SS Table 24" x 24" | 827 lbs. | 34" |
| 19136 | All SS Table 24" x 30" | 904 lbs. | 34" |
| 19137 | All SS Table 24" x 36" | 981 lbs. | 34" |
| 19138 | All SS Table 24" x 48" | 1058 lbs. | 34" |
| *19139 | All SS Table 24" x 60" | 1102 lbs. | 34" |
| *19140 | All SS Table 24" x 72" | 1146 lbs. | 34" |
| *26044 | All SS Table 24" x 84" | 1411 lbs. | 34" |
| *19141 | All SS Table 24" x 96" | 1510 lbs. | 34" |
| 19142 | All SS Table 30" x 30" | 992 lbs. | 34" |
| 19143 | All SS Table 30" x 36" | 1080 lbs. | 34" |
| 19144 | All SS Table 30" x 48" | 1157 lbs. | 34" |
| *19145 | All SS Table 30" x 60" | 1190 lbs. | 34" |
| *19146 | All SS Table 30" x 72" | 1235 lbs. | 34" |
| *26045 | All SS Table 30" x 84" | 1499 lbs. | 34" |
| *19147 | All SS Table 30" x 96" | 1598 lbs. | 34" |

New

ALL STAINLESS STEEL WORKTABLES COMES WITH 6 LEGS AND STAINLESS STEEL UNDERSHELVES

| ITEM | DIMENSIONS | LOAD CAPACITY | HEIGHT |
|--------|-------------------------|---------------|--------|
| *45154 | All SS Table 24" x 108" | 1120 lbs. | 34" |
| *45155 | All SS Table 30" x 108" | 1240 lbs. | 34" |

ALL STAINLESS STEEL WORKTABLES WITH 4" BACKSPASH

| ITEM | DIMENSIONS | LOAD CAPACITY | HEIGHT |
|--------|---|---------------|--------|
| 44335 | All SS Table 24" x 24" with 4" backsplash | 794 lbs. | 38" |
| 44336 | All SS Table 24" x 30" with 4" backsplash | 882 lbs. | 38" |
| 44337 | All SS Table 24" x 36" with 4" backsplash | 948 lbs. | 38" |
| 44338 | All SS Table 24" x 48" with 4" backsplash | 1025 lbs. | 38" |
| *44339 | All SS Table 24" x 60" with 4" backsplash | 1058 lbs. | 38" |
| *44340 | All SS Table 24" x 72" with 4" backsplash | 1102 lbs. | 38" |
| *44341 | All SS Table 24" x 84" with 4" backsplash | 1367 lbs. | 38" |
| *44342 | All SS Table 24" x 96" with 4" backsplash | 1466 lbs. | 38" |
| 44343 | All SS Table 30" x 30" with 4" backsplash | 948 lbs. | 38" |
| 44344 | All SS Table 30" x 36" with 4" backsplash | 1036 lbs. | 38" |
| 44345 | All SS Table 30" x 48" with 4" backsplash | 1113 lbs. | 38" |
| *44346 | All SS Table 30" x 60" with 4" backsplash | 1146 lbs. | 38" |
| *44347 | All SS Table 30" x 72" with 4" backsplash | 1190 lbs. | 38" |
| *44348 | All SS Table 30" x 84" with 4" backsplash | 1455 lbs. | 38" |
| *44349 | All SS Table 30" x 96" with 4" backsplash | 1554 lbs. | 38" |

ALL STAINLESS STEEL UNDERSHELVES FOR THE ALL STAINLESS STEEL WORKTABLES

| ITEM | DIMENSIONS | LOAD CAPACITY |
|--------|---|---------------|
| 21607 | 24" x 24" SS Undershelf for 19135 and 44335 | 364 lbs. |
| 21608 | 24" x 30" SS Undershelf for 19136 and 44336 | 397 lbs. |
| 21609 | 24" x 36" SS Undershelf for 19137 and 44337 | 441 lbs. |
| 21610 | 24" x 48" SS Undershelf for 19138 and 44338 | 474 lbs. |
| *21611 | 24" x 60" SS Undershelf for 19139 and 44339 | 485 lbs. |
| *21612 | 24" x 72" SS Undershelf for 19140 and 44340 | 507 lbs. |
| *21613 | 24" x 84" SS Undershelf for 26044 and 44341 | 617 lbs. |
| *21614 | 24" x 96" SS Undershelf for 19141 and 44342 | 672 lbs. |
| 21615 | 30" x 30" SS Undershelf for 19142 and 44343 | 419 lbs. |
| 21616 | 30" x 36" SS Undershelf for 19143 and 44344 | 463 lbs. |
| 21617 | 30" x 48" SS Undershelf for 19144 and 44345 | 496 lbs. |
| *21618 | 30" x 60" SS Undershelf for 19145 and 44346 | 507 lbs. |
| *21619 | 30" x 72" SS Undershelf for 19146 and 44347 | 529 lbs. |
| *21620 | 30" x 84" SS Undershelf for 26045 and 44348 | 639 lbs. |
| *21621 | 30" x 96" SS Undershelf for 19147 and 44349 | 694 lbs. |



website: www.omcan.com
 email: sales@omcan.com
 call: 1.800.465.0234
 fax: 905.607.0234

All prices are SPECIAL NET CAD.
 OFFER ENDS: AUGUST 31, 2024



Limited quantities available. Prices valid to authorized Omcan Dealers only. Special prices on this flyer may not be included to any special freight program. E&OE. Prices will be subject to change as per exchange rates.

NOT APPLICABLE TO PRIOR PURCHASE.



STAINLESS STEEL WORKTABLES WITH ROLLED DIE CAST LEG CLAMPS



- 18 Gauge 430 Stainless Steel top with galvanized legs
- Support Channels are secured via bolt and acorn style nut
- The Galvanized Under-shelf has Rolled Die Cast Leg Clamps
- Legs are secured by single set screw design
- Plastic Bullet Feet

Optional casters and extra shelves are available for All Stainless Steel & Standard Worktables.

STAINLESS STEEL WORKTABLES

| ITEM | DIMENSIONS | LOAD CAPACITY | HEIGHT |
|--------|--------------------|---------------|--------|
| 17577 | SS Table 24" x 24" | 827 lbs. | 34" |
| 17578 | SS Table 24" x 30" | 904 lbs. | 34" |
| 17579 | SS Table 24" x 36" | 992 lbs. | 34" |
| 17580 | SS Table 24" x 48" | 1069 lbs. | 34" |
| *17581 | SS Table 24" x 60" | 1102 lbs. | 34" |
| *17582 | SS Table 24" x 72" | 1146 lbs. | 34" |
| *20198 | SS Table 24" x 84" | 1411 lbs. | 34" |
| *18854 | SS Table 24" x 96" | 1510 lbs. | 34" |
| 17584 | SS Table 30" x 30" | 992 lbs. | 35.75" |
| 17585 | SS Table 30" x 36" | 1080 lbs. | 35.75" |
| *17586 | SS Table 30" x 48" | 1157 lbs. | 35.75" |
| *17587 | SS Table 30" x 60" | 1190 lbs. | 35.75" |
| *17588 | SS Table 30" x 72" | 1235 lbs. | 35.75" |
| *20434 | SS Table 30" x 84" | 1499 lbs. | 35.75" |
| *18855 | SS Table 30" x 96" | 1598 lbs. | 35.75" |



Rolled Die Cast Leg Clamps

STAINLESS STEEL WORKTABLES WITH 4" BACKSPASH

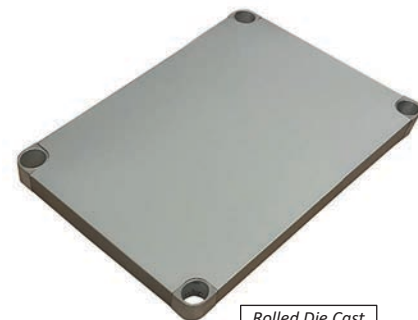
| ITEM | DIMENSIONS | BACKSPASH | LOAD CAPACITY | HEIGHT |
|--------|------------|-----------|---------------|--------|
| 23793 | 24" x 24" | 4" | 794 lbs. | 38" |
| 23794 | 24" x 30" | 4" | 882 lbs. | 38" |
| 23795 | 24" x 36" | 4" | 948 lbs. | 38" |
| 23796 | 24" x 48" | 4" | 1025 lbs. | 38" |
| *23797 | 24" x 60" | 4" | 1058 lbs. | 38" |
| *23798 | 24" x 72" | 4" | 1102 lbs. | 38" |
| *23799 | 24" x 84" | 4" | 1367 lbs. | 38" |
| *23800 | 24" x 96" | 4" | 1466 lbs. | 38" |
| 23801 | 30" x 30" | 4" | 948 lbs. | 38" |
| 23802 | 30" x 36" | 4" | 1036 lbs. | 38" |
| 23803 | 30" x 48" | 4" | 1113 lbs. | 38" |
| *23804 | 30" x 60" | 4" | 1146 lbs. | 38" |
| *23805 | 30" x 72" | 4" | 1190 lbs. | 38" |
| *23806 | 30" x 84" | 4" | 1455 lbs. | 38" |
| *23807 | 30" x 96" | 4" | 1554 lbs. | 38" |



Rolled Die Cast Leg Clamps

GALVANIZED UNDERSHELVES FOR THE ELITE SERIES WORKTABLES

| ITEM | DIMENSIONS | COMPATIBLE WITH | LOAD CAPACITY |
|--------|------------|-----------------|---------------|
| 17614 | 24" x 24" | 17577 and 23793 | 342 lbs. |
| 17615 | 24" x 30" | 17578 and 23794 | 375 lbs. |
| 17616 | 24" x 36" | 17579 and 23795 | 419 lbs. |
| 17617 | 24" x 48" | 17580 and 23796 | 452 lbs. |
| *17618 | 24" x 60" | 17581 and 23797 | 463 lbs. |
| *17619 | 24" x 72" | 17582 and 23798 | 485 lbs. |
| *17620 | 24" x 84" | 20198 and 23799 | 595 lbs. |
| *17621 | 24" x 96" | 18854 and 23800 | 650 lbs. |
| 17622 | 30" x 30" | 17584 and 23801 | 397 lbs. |
| 17623 | 30" x 36" | 17585 and 23802 | 441 lbs. |
| 17624 | 30" x 48" | 17586 and 23803 | 474 lbs. |
| *17625 | 30" x 60" | 17587 and 23804 | 485 lbs. |
| *17626 | 30" x 72" | 17588 and 23805 | 507 lbs. |
| *17627 | 30" x 84" | 20434 and 23806 | 617 lbs. |
| *17628 | 30" x 96" | 18855 and 23807 | 672 lbs. |



Rolled Die Cast Leg Clamps





TABLES AND STORAGE SOLUTION



STANDARD SERIES WORKTABLES

STAINLESS STEEL WORKTABLES *New Size 18"*

| ITEM | DIMENSIONS | LOAD CAPACITY | HEIGHT |
|--------|--------------------|---------------|--------|
| 24196 | SS Table 18" x 24" | 220 lbs. | 34" |
| 47719 | SS Table 18" x 30" | 265 lbs. | 34" |
| 47720 | SS Table 18" x 36" | 265 lbs. | 34" |
| 47721 | SS Table 18" x 48" | 287 lbs. | 34" |
| *47722 | SS Table 18" x 60" | 331 lbs. | 34" |
| *47723 | SS Table 18" x 72" | 331 lbs. | 34" |
| *47724 | SS Table 18" x 84" | 353 lbs. | 34" |
| *47725 | SS Table 18" x 96" | 375 lbs. | 34" |
| 43182 | SS Table 24" x 18" | 220 lbs. | 34" |
| 22063 | SS Table 24" x 24" | 485 lbs. | 34" |
| 22064 | SS Table 24" x 30" | 529 lbs. | 34" |
| 22065 | SS Table 24" x 36" | 573 lbs. | 34" |
| 22066 | SS Table 24" x 48" | 606 lbs. | 34" |
| *22067 | SS Table 24" x 60" | 650 lbs. | 34" |
| *22068 | SS Table 24" x 72" | 705 lbs. | 34" |
| *22069 | SS Table 24" x 84" | 1036 lbs. | 34" |
| *22070 | SS Table 24" x 96" | 1102 lbs. | 34" |
| 43183 | SS Table 30" x 18" | 265 lbs. | 34" |
| 22071 | SS Table 30" x 30" | 551 lbs. | 34" |
| 22072 | SS Table 30" x 36" | 595 lbs. | 34" |
| 22073 | SS Table 30" x 48" | 639 lbs. | 34" |
| *22074 | SS Table 30" x 60" | 679 lbs. | 34" |
| *22075 | SS Table 30" x 72" | 750 lbs. | 34" |
| *22076 | SS Table 30" x 84" | 1091 lbs. | 34" |
| *22077 | SS Table 30" x 96" | 1157 lbs. | 34" |

- 18 Gauge 430 Stainless Steel top with galvanized legs
- Support Channels secured via bolt and acorn style nut
- The Galvanized Under-shelf designed with welded V pipe leg supports
- Legs secured by single set-screw design
- Plastic Bullet Feet



Optional casters and extra shelves are available for All Stainless Steel & Standard Worktables.

Welded Stainless Steel Tables available by request.
Please call for more information.



STAINLESS STEEL WORKTABLES WITH 4" BACKSPASH

| ITEM | DIMENSIONS | BACKSPASH | LOAD CAPACITY | HEIGHT |
|--------|------------|-----------|---------------|--------|
| 22078 | 24" x 24" | 4" | 485 lbs. | 38" |
| 22079 | 24" x 30" | 4" | 529 lbs. | 38" |
| 22080 | 24" x 36" | 4" | 573 lbs. | 38" |
| 22081 | 24" x 48" | 4" | 606 lbs. | 38" |
| *22082 | 24" x 60" | 4" | 650 lbs. | 38" |
| *22083 | 24" x 72" | 4" | 705 lbs. | 38" |
| *22084 | 24" x 84" | 4" | 1036 lbs. | 38" |
| *22085 | 24" x 96" | 4" | 1102 lbs. | 38" |
| 22086 | 30" x 30" | 4" | 551 lbs. | 38" |
| 22087 | 30" x 36" | 4" | 595 lbs. | 38" |
| 22088 | 30" x 48" | 4" | 639 lbs. | 38" |
| *22089 | 30" x 60" | 4" | 679 lbs. | 38" |
| *22090 | 30" x 72" | 4" | 750 lbs. | 38" |
| *22091 | 30" x 84" | 4" | 1091 lbs. | 38" |
| *22092 | 30" x 96" | 4" | 1157 lbs. | 38" |



GALVANIZED UNDERSHELVES FOR STANDARD WORKTABLES *New Size 18"*

| ITEM | DIMENSIONS | COMPATIBLE WITH | LOAD CAPACITY |
|--------|------------|-----------------|---------------|
| 48210 | 18" x 24" | 24196 | 176 lbs. |
| 48211 | 18" x 30" | 47719 | 220 lbs. |
| 48212 | 18" x 36" | 47720 | 220 lbs. |
| 48213 | 18" x 48" | 47721 | 231 lbs. |
| *48214 | 18" x 60" | 47722 | 265 lbs. |
| *48215 | 18" x 72" | 47723 | 265 lbs. |
| *48216 | 18" x 84" | 47724 | 276 lbs. |
| *48217 | 18" x 96" | 47725 | 287 lbs. |
| 44291 | 24" x 18" | 43182 | 176 lbs. |
| 22093 | 24" x 24" | 22063 and 22078 | 298 lbs. |
| 22094 | 24" x 30" | 22064 and 22079 | 331 lbs. |
| 22095 | 24" x 36" | 22065 and 22080 | 331 lbs. |
| 22096 | 24" x 48" | 22066 and 22081 | 364 lbs. |
| *22097 | 24" x 60" | 22067 and 22082 | 397 lbs. |
| *22098 | 24" x 72" | 22068 and 22083 | 397 lbs. |
| *22099 | 24" x 84" | 22069 and 22084 | 430 lbs. |
| *22100 | 24" x 96" | 22070 and 22085 | 463 lbs. |



GALVANIZED UNDERSHELVES FOR STANDARD WORKTABLES

| ITEM | DIMENSIONS | COMPATIBLE WITH | LOAD CAPACITY |
|--------|------------|-----------------|---------------|
| 44292 | 30" x 18" | 43183 | 220 lbs. |
| 22101 | 30" x 30" | 22071 and 22086 | 331 lbs. |
| 22102 | 30" x 36" | 22072 and 22087 | 364 lbs. |
| 22103 | 30" x 48" | 22073 and 22088 | 364 lbs. |
| *22104 | 30" x 60" | 22074 | 397 lbs. |
| *22105 | 30" x 72" | 22075 and 22090 | 397 lbs. |
| *22106 | 30" x 84" | 22076 and 22091 | 452 lbs. |
| *22107 | 30" x 96" | 22077 and 22092 | 485 lbs. |

website: www.omcan.com
email: sales@omcan.com
call: 1.800.465.0234
fax: 905.607.0234

All prices are SPECIAL NET CAD.
OFFER ENDS: AUGUST 31, 2024



Limited quantities available. Prices valid to authorized Omcan Dealers only.
Special prices on this flyer may not be included to any special freight program.
E&OE. Prices will be subject to change as per exchange rates.

NOT APPLICABLE TO PRIOR PURCHASE.



TABLE ACCESSORIES AND SINKS



BULLET FEET AND CASTER/WHEEL FOR ALL WORKTABLES

Worktables located on pages 7 and 8

BULLET FEET

| ITEM | DESCRIPTION |
|-------|---|
| 39313 | Stainless Steel Bullet Foot |
| 23510 | Plastic Bullet Foot (Replacement) |
| 23520 | Bullet Foot- Plastic Inside Stainless Steel Outside |



WORK TABLE WHEEL

| ITEM | DESCRIPTION |
|-------|---|
| 14395 | Work Table Wheel (with Brakes) 5" Dia x 1 1/4" Thick |



GALVANIZED LEG BRACES FOR 24" / 30" WORKTABLE

Replaces undershelf to convert into sitting table or for storage use under the table.



DRAWERS FOR 24" / 30" WORKTABLE

| ITEM | DESCRIPTION |
|-------|----------------------|
| 24578 | 24" deep work tables |
| 24579 | 30" deep work tables |



| ITEM | DESCRIPTION |
|-------|------------------------------------|
| 38035 | Leg brace for work table 24" x 48" |
| 38036 | Leg brace for work table 24" x 60" |
| 38037 | Leg brace for work table 24" x 72" |
| 39033 | Leg brace for work table 24" x 84" |
| 39034 | Leg brace for work table 24" x 96" |

| ITEM | DESCRIPTION |
|-------|------------------------------------|
| 39384 | Leg brace for work table 30" x 48" |
| 39385 | Leg brace for work table 30" x 60" |
| 39386 | Leg brace for work table 30" x 72" |
| 39387 | Leg brace for work table 30" x 84" |
| 39388 | Leg brace for work table 30" x 96" |

ALL STAINLESS STEEL TABLE WITH SINK AND 6" BACKSPLASH

- 18 Gauge, 430 Stainless steel undershelf and hat channel
- Stainless steel leg and socket; stainless steel bullet foot
- Aluminum corner bracket on undershelf
- 3.5" drain basket included
- Low lead deck-mounted faucet FD-4-10LL included



LEFT SINK

| ITEM | DIMENSIONS | SINK DIMENSIONS (LxWxH) | TABLE LOAD CAPACITY | HEIGHT |
|-------|-----------------|-------------------------|---------------------|--------|
| 44259 | 24" x 60" x 34" | 14"l X 16"w X 10"h | 1089 lbs. | 40" |
| 44301 | 24" x 72" x 34" | 14"l X 16"w X 10"h | 1133 lbs. | 40" |
| 43231 | 30" x 60" x 34" | 16"l X 20"w X 10"h | 1177 lbs. | 40" |
| 43239 | 30" x 72" x 34" | 16"l X 20"w X 10"h | 1221 lbs. | 40" |

RIGHT SINK

| ITEM | DIMENSIONS | SINK DIMENSIONS (LxWxH) | TABLE LOAD CAPACITY | HEIGHT |
|-------|-----------------|-------------------------|---------------------|--------|
| 44300 | 24" x 60" x 34" | 14"l X 16"w X 10"h | 1089 lbs. | 40" |
| 44302 | 24" x 72" x 34" | 14"l X 16"w X 10"h | 1133 lbs. | 40" |
| 43238 | 30" x 60" x 34" | 16"l X 20"w X 10"h | 1177 lbs. | 40" |
| 43240 | 30" x 72" x 34" | 16"l X 20"w X 10"h | 1221 lbs. | 40" |



STAINLESS STEEL TABLE WITH SINK AND 6" BACKSPLASH WITH GALVANIZED LEGS

- 18 Gauge galvanized undershelf and hat channel
- Galvanized leg and socket; plastic steel bullet foot
- Aluminum corner bracket on undershelf
- 3.5" drain basket included
- Low lead deck-mounted faucet FD-4-10LL included



LEFT SINK

| ITEM | DIMENSIONS | SINK DIMENSIONS (LxWxH) | TABLE LOAD CAPACITY | HEIGHT |
|-------|------------------|-------------------------|---------------------|--------|
| 43241 | 30" x 60" x 34"H | 16"l X 20"w X 10"h | 1150 lbs. | 40" |
| 43243 | 30" x 72" x 34"H | 16"l X 20"w X 10"h | 1200 lbs. | 40" |

RIGHT SINK

| ITEM | DIMENSIONS | SINK DIMENSIONS (LxWxH) | TABLE LOAD CAPACITY | HEIGHT |
|-------|------------------|-------------------------|---------------------|--------|
| 43242 | 30" x 60" x 34"H | 16"l X 20"w X 10"h | 1150 lbs. | 40" |
| 43244 | 30" x 72" x 34"H | 16"l X 20"w X 10"h | 1200 lbs. | 40" |



website: www.omcan.com
 email: sales@omcan.com
 call: 1.800.465.0234
 fax: 905.607.0234

All prices are SPECIAL NET CAD.
 OFFER ENDS: AUGUST 31, 2024



Limited quantities available. Prices valid to authorized Omcan Dealers only. Special prices on this flyer may not be included to any special freight program. E&OE. Prices will be subject to change as per exchange rates.
 NOT APPLICABLE TO PRIOR PURCHASE.



STAINLESS STEEL FOLDING TABLE

WITH UNDERSHELF (snap on, removable undershelf)

| ITEM | DESCRIPTION | LOADING CAPACITY | DIMENSIONS |
|-------|---------------------------|------------------|--------------------|
| 41234 | With undershelf 24" x 60" | 280 kg / 616 lbs | 24" x 60" x 30.63" |
| 41235 | With undershelf 24" x 72" | 295 kg / 649 lbs | 24" x 72" x 30.63" |
| 41236 | With undershelf 30" x 60" | 310 kg / 682 lbs | 30" x 60" x 30.63" |
| 41237 | With undershelf 30" x 72" | 280 kg / 616 lbs | 30" x 72" x 30.63" |



Folding table with undershelf



WITHOUT UNDERSHELF

| ITEM | DESCRIPTION | LOADING CAPACITY | DIMENSIONS |
|-------|------------------------------|------------------|--------------------|
| 41230 | Without undershelf 24" x 60" | 240 kg / 528 lbs | 24" x 60" x 30.63" |
| 41231 | Without undershelf 24" x 72" | 260 kg / 572 lbs | 24" x 72" x 30.63" |
| 41232 | Without undershelf 30" x 60" | 275 kg / 605 lbs | 30" x 60" x 30.63" |
| 41233 | Without undershelf 30" x 72" | 250 kg / 550 lbs | 30" x 72" x 30.63" |



Folding table without undershelf



CABINET BASE FOR COUNTERTOP GAS RANGES

- 16-gauge • 430 stainless steel top and body • Open top and front • Stainless steel leg and socket
- Stainless steel bullet feet • Fully welded

| ITEM | DESCRIPTION | DIMENSIONS |
|-------|--|-----------------|
| 43838 | Cabinet Base for Gas Equipment #43730, 43734, 43727, 43017 | 25" X 24" X 25" |
| 44229 | Cabinet Base for Gas Equipment #43731, 43735, 43728, 43018 | 25" x 36" x 25" |



43838

44229



MEAT GRINDER TABLE

| ITEM | DESCRIPTION | DIMENSIONS |
|-------|--|-----------------|
| 37961 | Stainless Steel Knock-down Meat Grinder Worktable with 15" back splash and 15" side splash | 31" x 31" x 20" |



37961





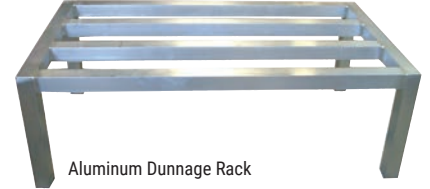
STAINLESS STEEL WALL SHELVES

- 18 gauge 430 stainless steel
- The shelf is supported by two triangular brackets



| ITEM | DIMENSIONS | LOAD CAPACITY |
|-------|------------|---------------|
| 22108 | 12" x 24" | 209 lbs. |
| 22109 | 12" x 36" | 231 lbs. |
| 22110 | 12" x 48" | 253 lbs. |
| 22111 | 12" x 60" | 286 lbs. |
| 30455 | 12" x 72" | 286 lbs. |
| 46508 | 14" x 24" | 242 lbs. |
| 46509 | 14" x 36" | 275 lbs. |
| 46510 | 14" x 48" | 308 lbs. |
| 46511 | 14" x 60" | 352 lbs. |
| 24409 | 16" x 36" | 308 lbs. |
| 24410 | 16" x 48" | 352 lbs. |
| 24411 | 16" x 60" | 418 lbs. |

ALUMINUM DUNNAGE RACKS



| ITEM | DESCRIPTION | CAPACITY | WEIGHT |
|--------|-----------------|-----------|---------|
| 22125 | 20" x 36" x 12" | 1600 lbs. | 7 lbs. |
| 22126 | 20" x 48" x 12" | 1600 lbs. | 9 lbs. |
| *22127 | 20" x 60" x 12" | 1600 lbs. | 11 lbs. |

WALL-MOUNTED STAINLESS STEEL SLANT RACK SHELVES WITH DRAIN

- 18 gauge 304 stainless steel



| ITEM | DESCRIPTION |
|-------|---------------------------|
| 28489 | 21" W x 22.5"D x 14.25" H |
| 28490 | 42" W x 22.5"D x 14.25"H |
| 47298 | 63" W x 22.5"D x 14.25"H |
| 47299 | 72" W x 22.5"D x 14.25"H |

STAINLESS STEEL POT RACKS

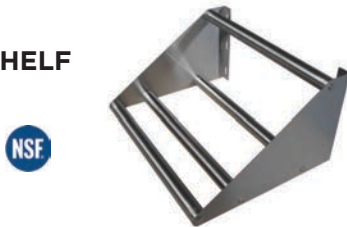


WITH SHELF

| ITEM | DESCRIPTION |
|-------|----------------------------|
| 31851 | 12" x 36" with 7 pc Hooks |
| 31852 | 12" x 48" with 9 pc Hooks |
| 31853 | 12" x 60" with 11 pc Hooks |

TUBULAR RACK SHELF

- 16 gauge 430 stainless steel



| ITEM | DESCRIPTION | DIMENSIONS |
|-------|-------------|---------------------|
| 44619 | 36" Wide | 15" x 36" x 11 1/4" |
| 44620 | 48" Wide | 15" x 48" x 11 1/4" |
| 44621 | 60" Wide | 15" x 60" x 11 1/4" |

WITH WALL-MOUNTED POT RACK

| ITEM | DESCRIPTION |
|-------|--------------------------------|
| 31854 | 36" with 3 pc Plated Pot Hooks |
| 31855 | 48" with 4 pc Plated Pot Hooks |
| 31856 | 60" with 5 pc Plated Pot Hooks |



STAINLESS STEEL MICROWAVE SHELVES

- 18 gauge 430 stainless steel



| ITEM | DIMENSIONS |
|-------|------------|
| 40212 | 20" x 24" |
| 40213 | 20" x 30" |



8 HOOKS STAINLESS STEEL RACK

| ITEM | DESCRIPTION | LOAD CAPACITY |
|-------|--------------------|------------------|
| 44541 | Hook Rack 48" x 3" | 2 lbs. each hook |





STAINLESS STEEL OVERSHELF WITH DOUBLE TIER

- Adjustable Lower Shelf
- Double Tier
- Stainless Steel Post and Socket



| ITEM | DESCRIPTION | DIMENSIONS |
|--------|-------------------|-----------------|
| 23988 | 4 Post and Socket | 14" x 48" x 32" |
| *23989 | 4 Post and Socket | 14" x 60" x 32" |
| *23990 | 6 Post and Socket | 14" x 72" x 32" |

OPEN WALL CABINET

- 18 gauge 340 stainless steel

| ITEM | DESCRIPTION | LOAD CAPACITY |
|-------|-------------------|---------------|
| 46408 | 15" x 36" x 32.5" | 360 lbs. |
| 46409 | 15" x 48" x 32.5" | 380 lbs. |
| 46410 | 15" x 60" x 32.5" | 400 lbs. |



STAINLESS STEEL OVERSHELF WITH SINGLE TIER

- 18 gauge 430 stainless steel

| ITEM | DIMENSIONS |
|--------|-----------------|
| 44616 | 12" x 48" x 18" |
| *44617 | 12" x 60" x 18" |
| *44618 | 12" x 72" x 18" |



STAINLESS STEEL DISH CABINET

- 18-Gauge Stainless steel dish cabinets
- 304 Stainless steel top, walls, bottom and hat channel
- Centered channel on each shelf
- 1 5/8" x 6" stainless steel leg, socket and bullet feet

| ITEM | DIMENSIONS | WEIGHT |
|-------|--------------------|------------|
| 38029 | 15"D x 48"W x 36"H | 99.2 lbs |
| 38030 | 15"D x 60"W x 36"H | 154.3 lbs |
| 38031 | 15"D x 72"W x 36"H | 188.5 lbs. |
| 38032 | 18"D x 48"W x 36"H | 119.1 lbs |
| 38033 | 18"D x 60"W x 36"H | 185.2 lbs |
| 38034 | 18"D x 72"W x 36"H | 252.4 lbs. |



ALUMINUM KEG RACK



| ITEM | DESCRIPTION | DIMENSIONS |
|-------|-------------|---------------------|
| 44613 | 4 Keg | 20" x 42" x 76 3/8" |
| 44614 | 6 Keg | 20" x 60" x 76 3/8" |
| 44615 | 8 Keg | 20" x 72" x 76 3/8" |



STEP LADDER

- Step Dimensions: 15.75" x 9.75"
- 2 Steps, Step Dimensions: 15.75" x 9.75"
- Distance Between Steps: 10.75"
- Wheel Diameter: 2"
- Dimensions: 20.5" x 15.5" x 39.5"

| ITEM | DESCRIPTION |
|-------|--------------------------|
| 31368 | All Steel and Heavy Duty |



MOBILE WORK BENCH WITH 10 DRAWERS

- Dimensions: 18" x 55" x 37"
- Load Capacity: 500 kg / 1100 lbs
- Weight: 220 lbs.

- Made of 430 anti-fingerprint stainless steel
- Comes with 10 drawers
- Rubberized wood top
- 45kgs/100lb-ball bearing drawer slide
- Aluminum drawer with handle
- 6x2 caster (2 swivel, 2 swivel with brake)
- Drawer liner included
- Key included
- Great for outdoor patios



| ITEM | DESCRIPTION |
|-------|-------------------------------|
| 40463 | 56" Workbench with 10 Drawers |

FLOOR TROUGH WITH STAINLESS STEEL GRATING



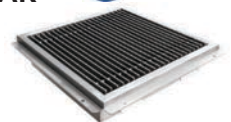
| ITEM | DIMENSIONS |
|-------|------------|
| 44608 | 12" x 36" |
| 44609 | 12" x 48" |
| 44610 | 12" x 60" |
| 44611 | 12" x 72" |



FLOOR TROUGH DRAIN WITH STAINLESS STEEL GRATING BAR



| ITEM | DIMENSIONS |
|-------|------------|
| 44612 | 18" x 18" |





SHELVES

CHROME STOCK SHELVES



| ITEM | DIMENSIONS |
|--------|------------|
| 20098 | 14" x 24" |
| 20099 | 14" x 30" |
| 20100 | 14" x 36" |
| 20101 | 14" x 42" |
| 20102 | 14" x 48" |
| 20103 | 14" x 54" |
| *20104 | 14" x 60" |
| *20105 | 14" x 72" |

| ITEM | DIMENSIONS |
|--------|------------|
| 20106 | 18" x 24" |
| 20107 | 18" x 30" |
| 20108 | 18" x 36" |
| 20109 | 18" x 42" |
| 20110 | 18" x 48" |
| 20111 | 18" x 54" |
| *20112 | 18" x 60" |
| *20113 | 18" x 72" |

| ITEM | DIMENSIONS |
|--------|------------|
| 24226 | 21" x 24" |
| 24227 | 21" x 30" |
| 24228 | 21" x 36" |
| 24229 | 21" x 42" |
| 24230 | 21" x 48" |
| 24231 | 21" x 54" |
| *24232 | 21" x 60" |
| *24233 | 21" x 72" |

| ITEM | DIMENSIONS |
|--------|------------|
| 20114 | 24" x 24" |
| 20115 | 24" x 30" |
| 20116 | 24" x 36" |
| 20117 | 24" x 42" |
| 20118 | 24" x 48" |
| 20119 | 24" x 54" |
| *20120 | 24" x 60" |
| *20121 | 24" x 72" |

CHROME POSTS WITH/WITHOUT LEVELER

Capacity:
Under 48" in length, up to 850 lbs./shelf
Over 48" in length, up to 600 lbs./shelf



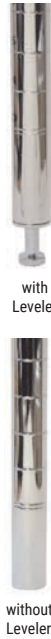
CHROME POST WITH LEVELER

| ITEM | DESCRIPTION |
|-------|------------------|
| 47682 | 8" with Leveler |
| 20091 | 13" with Leveler |
| 20092 | 34" with Leveler |
| 20093 | 54" with Leveler |
| 20094 | 64" with Leveler |
| 20095 | 72" with Leveler |
| 20096 | 74" with Leveler |
| 20097 | 84" with Leveler |

CHROME POST WITHOUT LEVELER

| ITEM | DESCRIPTION |
|-------|---------------------|
| 31375 | 34" without Leveler |
| 31376 | 54" without Leveler |
| 31377 | 64" without Leveler |
| 31378 | 72" without Leveler |
| 31379 | 74" without Leveler |
| 31380 | 84" without Leveler |

Ideal with Caster (14460 or 14461) or Foot Plate (24829)



with Leveler

without Leveler

CHROME WIRE BASKET SHELF



| ITEM | DIMENSION | LOAD CAPACITY |
|-------|-----------|---------------|
| 47323 | 18" x 36" | 850 lbs. |
| 47324 | 18" x 48" | 600 lbs. |

CHROME WIRE WINE SHELF

New Style



| ITEM | DIMENSION | LOAD CAPACITY |
|-------|-----------|---------------|
| 48222 | 18" x 36" | 850 lbs. |
| 48394 | 18" x 48" | 600 lbs. |

COMPLETE CHROME SHELVING KIT

(4pc.) size shelves, (4 set) 72" posts, (16pc.) Clips, (4pc.) Levelers



| ITEM | DIMENSION | DESCRIPTION |
|--------|-----------------|--------------------------|
| 45164 | 18" x 36" x 72" | (4pc.) 18" x 36" shelves |
| 45165 | 18" x 48" x 72" | (4pc.) 18" x 48" shelves |
| 45166 | 18" x 60" x 72" | (4pc.) 18" x 60" shelves |
| 45167 | 24" x 36" x 72" | (4pc.) 24" x 36" shelves |
| 45168 | 24" x 48" x 72" | (4pc.) 24" x 48" shelves |
| *45169 | 24" x 60" x 72" | (4pc.) 24" x 60" shelves |

CHROME ACCESSORIES



Post Clamp

S Clips

Leveler Insert

Chrome Wall Bracket

Chrome Shelf Divider

| ITEM | DESCRIPTION |
|-------|---|
| 24827 | Post Clamp for Chrome Wire Shelving |
| 19752 | S clips to connect shelves Chrome |
| 14463 | Leveler Insert for Chrome Wire Shelving |
| 24249 | 14" Wall Bracket Chrome |
| 24250 | 18" Wall Bracket Chrome |
| 47509 | 21" Wall Bracket Chrome |
| 24251 | 24" Wall Bracket Chrome |
| 24255 | 14" Pressure Fit Shelf Divider Chrome |
| 24256 | 18" Pressure Fit Shelf Divider Chrome |

OTHER ACCESSORIES FOR BOTH CHROME AND EPOXY



14460

14461

Black ABS Sleeves

Leveler Bolts

End Cap

Foot Plate

| ITEM | DESCRIPTION |
|-------|--|
| 14460 | 5" Industrial Caster without brakes (Chrome & Epoxy) |
| 14461 | 5" Industrial Caster with brakes (Chrome & Epoxy) |
| 18307 | Black abs sleeves (4 / bag) |
| 14462 | End Cap |
| 14464 | Leveler Bolt (set of 4) |
| 24829 | Foot Plate For Wire Shelving |





SHELVES GREEN EPOXY STOCK SHELVES



| ITEM | DIMENSIONS |
|--------|------------|
| 20127 | 14" x 24" |
| 20128 | 14" x 30" |
| 20129 | 14" x 36" |
| 20130 | 14" x 42" |
| 20131 | 14" x 48" |
| 20132 | 14" x 54" |
| *20133 | 14" x 60" |
| *20134 | 14" x 72" |

| ITEM | DIMENSIONS |
|--------|------------|
| 20135 | 18" x 24" |
| 20136 | 18" x 30" |
| 20137 | 18" x 36" |
| 20138 | 18" x 42" |
| 20139 | 18" x 48" |
| 20140 | 18" x 54" |
| *20141 | 18" x 60" |
| *20142 | 18" x 72" |

| ITEM | DIMENSIONS |
|--------|------------|
| 24234 | 21" x 24" |
| 24235 | 21" x 30" |
| 24236 | 21" x 36" |
| 24237 | 21" x 42" |
| 24238 | 21" x 48" |
| 24239 | 21" x 54" |
| *24240 | 21" x 60" |
| *24241 | 21" x 72" |

| ITEM | DIMENSIONS |
|--------|------------|
| 20143 | 24" x 24" |
| 20144 | 24" x 30" |
| 20145 | 24" x 36" |
| 20146 | 24" x 42" |
| 20147 | 24" x 48" |
| 20148 | 24" x 54" |
| *20149 | 24" x 60" |
| *20150 | 24" x 72" |

GREEN EPOXY POSTS WITH/WITHOUT LEVELER

Capacity:
Under 48" in length, up to 850 lbs./shelf
Over 48" in length, up to 600 lbs./shelf



GREEN EPOXY POST WITH LEVELER

| ITEM | DESCRIPTION |
|-------|------------------|
| 47683 | 8" with Leveler |
| 23637 | 13" with Leveler |
| 16787 | 34" with Leveler |
| 20123 | 54" with Leveler |
| 20124 | 64" with Leveler |
| 20125 | 72" with Leveler |
| 23638 | 74" with Leveler |
| 20126 | 84" with Leveler |

GREEN EPOXY POST WITHOUT LEVELER

| ITEM | DESCRIPTION |
|-------|---------------------|
| 31369 | 34" without Leveler |
| 31370 | 54" without Leveler |
| 31371 | 64" without Leveler |
| 31372 | 72" without Leveler |
| 31373 | 74" without Leveler |
| 31374 | 84" without Leveler |

Ideal with Caster (14460 or 14461) or Foot Plate (24829)

GREEN EPOXY WIRE BASKET SHELF



47326

| ITEM | DIMENSION | LOAD CAPACITY |
|-------|-----------|---------------|
| 47325 | 18 x 36 | 850 lbs. |
| 47326 | 18 x 48 | 600 lbs. |

COMPLETE - GREEN EPOXY SHELVING KIT

| ITEM | DIMENSION | DESCRIPTION |
|--------|-----------------|---|
| 45170 | 18" x 36" x 72" | (4pc.) 18" x 36" shelves, (4 set) 72" posts, (16pc.) Clips, (4pc.) Levelers |
| 45171 | 18" x 48" x 72" | (4pc.) 18" x 48" shelves, (4 set) 72" posts, (16pc.) Clips, (4pc.) Levelers |
| 45172 | 18" x 60" x 72" | (4pc.) 18" x 60" shelves, (4 set) 72" posts, (16pc.) Clips, (4pc.) Levelers |
| 45173 | 24" x 36" x 72" | (4pc.) 24" x 36" shelves, (4 set) 72" posts, (16pc.) Clips, (4pc.) Levelers |
| 45174 | 24" x 48" x 72" | (4pc.) 24" x 48" shelves, (4 set) 72" posts, (16pc.) Clips, (4pc.) Levelers |
| *45175 | 24" x 60" x 72" | (4pc.) 24" x 60" shelves, (4 set) 72" posts, (16pc.) Clips, (4pc.) Levelers |



GREEN EPOXY ACCESSORIES



Post Clamp S Clips Leveler Insert Epoxy Wall Bracket

Epoxy Shelf Divider

| ITEM | DESCRIPTION |
|-------|--|
| 24828 | Post Clamp for Epoxy Wire Shelving |
| 19974 | S clips to connect shelves Epoxy |
| 20061 | Leveler Insert for Epoxy Wire Shelving |
| 24252 | 14" Wall Bracket Epoxy |
| 24253 | 18" Wall Bracket Epoxy |
| 47508 | 21" Wall Bracket Epoxy |
| 24254 | 24" Wall Bracket Epoxy |
| 24257 | 14" Pressure Fit Shelf Divider Epoxy |
| 24258 | 18" Pressure Fit Shelf Divider Epoxy |

OTHER ACCESSORIES FOR BOTH CHROME AND EPOXY



14460

14461

Black ABS
Sleeves

Leveler Bolts

End Cap

Foot Plate

| ITEM | DESCRIPTION |
|-------|--|
| 14460 | 5" Industrial Caster without brakes (Chrome & Epoxy) |
| 14461 | 5" Industrial Caster with brakes (Chrome & Epoxy) |
| 18307 | Black abs sleeves (4 / bag) |
| 14462 | End Cap |
| 14464 | Leveler Bolt (set of 4) |
| 24829 | Foot Plate For Wire Shelving |





New

SHELVES BLACK EPOXY STOCK SHELVES



| ITEM | DIMENSIONS |
|--------|------------|
| 48094 | 18" x 36" |
| 48095 | 18" x 48" |
| *48096 | 18" x 60" |

| ITEM | DIMENSIONS |
|--------|------------|
| 48097 | 24" x 36" |
| 48098 | 24" x 48" |
| *48099 | 24" x 60" |

New

BLACK EPOXY POSTS WITH LEVELER



with Leveler

Capacity:
Under 48" in length, up to 850 lbs./shelf
Over 48" in length, up to 600 lbs./shelf

BLACK EPOXY POST WITH LEVELER

| ITEM | DESCRIPTION |
|-------|------------------|
| 48090 | 64" with Leveler |
| 48091 | 72" with Leveler |
| 48092 | 74" with Leveler |
| 48093 | 84" with Leveler |

MEAT SLICER TABLE WITH SLIDER

- 430 SS removable flat top shelf
- 16GA Aluminum tubing



| ITEM | DIMENSIONS |
|-------|-------------------|
| 44722 | 29" x 20.5" x 30" |



44722

MOBILE RECEIVING DESK

- Fabricated in stainless steel
- Equipped with a lockable storage compartment
- Additional bottom storage and casters
- Built for convenience
- Assembly required



| ITEM | DESCRIPTION | NET DIMENSIONS | GROSS DIMENSIONS | NET WEIGHT |
|---------|---|-----------------------|------------------|------------|
| 13511 | Mobile receiving desk with undershelf and 5" Dia. casters | 24.25" x 22.50" x 53" | 25" x 37" x 11" | 57 lbs. |
| * 43470 | Mobile receiving desk with two lockable storage compartment and 4" Dia. casters | 25" x 23" x 56" | 24" x 25" x 59" | 111 lbs. |



13511



43470

BUDGET SINK

- 18GA 430 stainless steel
- Galvanized leg and socket
- Plastic bullet feet
- Drain Size: 3.5"



22121

| ITEM | DESCRIPTION | DIMENSIONS | WEIGHT |
|-------|---|-------------------|-----------|
| 22121 | 18" X 18" X 13" Sink with 3.5" Center Drain Basket and 8.75" Backsplash | 21" x 21.5" x 41" | 36.3 lbs. |

LAUNDRY SINK WITH FAUCET AND DRAIN BASKET

- 16-gauge, 304 stainless steel

| ITEM | DIMENSIONS |
|-------|-----------------------|
| 44593 | 24" x 21.45" x 33.16" |





POT SINKS

- Comes with drain guards
- Stainless steel
- Gauge: 18
- Drain size: 1.5" corner drain
- Drain size: 3.5" center drain
- conforms to CSA & NSF standards
- 16GA galvanized legs
- Shipped with legs removed
- Leg braces optional (please see below)



OneTub Sink
with Two
Drain Boards



OneTub Sink
with Left Drain Board

ONE TUB SINKS WITH CORNER AND CENTER DRAIN

| 18" x 18" x 11" | OVERALL WxDxH | WEIGHT | CORNER DRAIN | CENTRE DRAIN |
|------------------------|-------------------------|---------|--------------|--------------|
| With two drain boards | 54" x 23 1/2" x 44" | 69 lbs. | 25249 | 43759 |
| With left drain board | 38 1/2" x 23 1/2" x 44" | 60 lbs. | 25247 | 43760 |
| With right drain board | 38 1/2" x 23 1/2" x 44" | 60 lbs. | 25248 | 43762 |
| With no drain board | 23" x 23 1/2" x 44" | 32 lbs. | 22112 | 43761 |
| 18" x 21" x 14" | OVERALL WxDxH | WEIGHT | CORNER DRAIN | CENTRE DRAIN |
| With two drain boards | 54" x 26 1/2" x 44" | 71 lbs. | 25265 | 43774 |
| With left drain board | 38 1/2" x 26 1/2" x 44" | 62 lbs. | 25263 | 43771 |
| With Right drain board | 38 1/2" x 26 1/2" x 44" | 62 lbs. | 25264 | 43773 |
| With no drain board | 23" x 26 1/2" x 44" | 53 lbs. | 25262 | 43772 |
| 20" x 20" x 12" | OVERALL WxDxH | WEIGHT | CORNER DRAIN | CENTRE DRAIN |
| With no drain board | 25" x 25" x 44" | 27 lbs. | N/A | 43072 |
| 24" x 24" x 14" | OVERALL WxDxH | WEIGHT | CORNER DRAIN | CENTRE DRAIN |
| With two drain boards | 72" x 29 1/2" x 44" | 89 lbs. | 25255 | 43785 |
| With left drain board | 50 1/2" x 29 1/2" x 44" | 75 lbs. | 25253 | 41855 |
| With right drain board | 50 1/2" x 29 1/2" x 44" | 75 lbs. | 25254 | 43784 |
| With no drain board | 29" x 29 1/2" x 44" | 45 lbs. | 22118 | 43783 |

TWO TUB SINKS WITH CORNER AND CENTER DRAIN

| 18" x 18" x 11" | OVERALL WxDxH | WEIGHT | CORNER DRAIN | CENTRE DRAIN |
|------------------------|-------------------------|----------------|--------------|--------------|
| With two drain boards | 72" x 23 1/2" x 44" | 97 lbs. | 25252 | 43767 |
| With left drain board | 56 1/2" x 23 1/2" x 44" | 88 lbs. | 25250 | 43768 |
| With right drain board | 56 1/2" x 23 1/2" x 44" | 88 lbs. | 25251 | 43770 |
| With no drain board | 41" x 23 1/2" x 44" | 55 lbs. | 22113 | 43769 |
| 18" x 21" x 14" | OVERALL WxDxH | WEIGHT | CORNER DRAIN | CENTRE DRAIN |
| With two drain boards | 72" x 26 1/2" x 44" | 95 lbs. | 25269 | 43782 |
| With left drain board | 56 1/2" x 26 1/2" x 44" | 86 lbs. | 25267 | 43779 |
| With right drain board | 56 1/2" x 26 1/2" x 44" | 86 lbs. | 25268 | 43781 |
| With no drain board | 41" x 26 1/2" x 44" | 77 lbs. | 25266 | 43780 |
| 24" x 24" x 14" | OVERALL WxDxH | WEIGHT | CORNER DRAIN | CENTRE DRAIN |
| With two drain boards | 96" x 29 1/2" x 44" | 120 lbs. | 25258 | 43793 |
| With left drain board | 74 1/2" x 29 1/2" x 44" | 106 lbs. | 25256 | 43790 |
| With right drain board | 74 1/2" x 29 1/2" x 44" | 106 lbs. | 25257 | 43792 |
| With no drain board | 53" x 29 1/2" x 44" | 80 lbs. | 22119 | 43791 |



TwoTub Sink
with No Drain Boards



Three Tub Sink
with Two Drain Boards

THREE TUB SINKS WITH CORNER AND CENTER DRAIN

| 18" x 18" x 11" | OVERALL WxDxH | WEIGHT | CORNER DRAIN | CENTRE DRAIN |
|-------------------------------------|-------------------------|----------|--------------|--------------|
| With two drain boards | 90" x 23 1/2" x 44" | 95 lbs. | 22117 | 43763 |
| With left drain board | 75" x 23 1/2" x 44" | 80 lbs. | 22115 | 43764 |
| With right drain board | 75" x 23 1/2" x 44" | 80 lbs. | 22116 | 43766 |
| With no drain board | 59" x 23 1/2" x 44" | 75 lbs. | 22114 | 43765 |
| 18" x 21" x 14" | OVERALL WxDxH | WEIGHT | CORNER DRAIN | CENTRE DRAIN |
| With two drain boards | 90" x 26 1/2" x 44" | 119 lbs. | 25273 | 43778 |
| With left drain board | 74 1/2" x 26 1/2" x 44" | 112 lbs. | 25271 | 43775 |
| With right drain board | 74 1/2" x 26 1/2" x 44" | 112 lbs. | 25272 | 43777 |
| With no drain board | 59" x 26 1/2" x 44" | 102 lbs. | 25270 | 43776 |
| 24" x 24" x 14" (4 faucet holes) | OVERALL WxDxH | WEIGHT | CORNER DRAIN | CENTRE DRAIN |
| With two drain boards | 120" x 29 1/2" x 44" | 150 lbs. | 25261 | 43789 |
| With left drain board | 98 1/2" x 29 1/2" x 44" | 136 lbs. | 25259 | 43786 |
| With right drain board | 98 1/2" x 29 1/2" x 44" | 136 lbs. | 25260 | 43788 |
| With no drain board | 77" x 29 1/2" x 44" | 110 lbs. | 22120 | 43787 |



Three Tub Sink
with No Drain Boards





STAINLESS STEEL SPACE SAVER SINKS

- Comes with drain guards
- Stainless steel
- Gauge: 18
- Drain size: 1.5" corner drain
- Drain size: 3.5" center drain
- conforms to CSA & NSF standards
- 16GA galvanized legs
- Shipped with legs removed
- Leg braces optional (please see below)



39762 / 43755



39764 / 43756



39761 / 43758



THREE TUB SINKS WITH CORNER AND CENTER DRAIN

| 10" x 14" x 10" | DIMENSIONS | CORNER DRAIN | CENTRE DRAIN |
|-----------------------|--------------------------|--------------|--------------|
| 16" Two Drain Boards | 62" x 19.5" x 43.75" | 39764 | 43756 |
| 16" Left Drain Board | 48.63" x 19.50" x 43.75" | 39762 | 43755 |
| 16" Right Drain Board | 48.63" x 19.50" x 43.75" | 39763 | 43757 |
| With No Drain Board | 35.12" x 19.50" x 43.75" | 39761 | 43758 |

THREE COMPARTMENT CORNER SINK

| ITEM | 18" x 18" x 14" | OVERALL DIMENSIONS | WEIGHT |
|-------|--|--------------------|--------|
| 43073 | Three compartment corner sink with center drain, 2 drainboards | 18"D x 18"W x 14"H | 79 lbs |



43073



STAINLESS STEEL REMOVABLE DRAIN BOARD

| ITEM | DESCRIPTION |
|-------|--------------------|
| 21142 | for 18" x 18" sink |
| 21143 | for 24" x 24" sink |



CORNER DRAIN GUARD FOR CORNER DRAIN SINK ONLY

| ITEM | DESCRIPTION |
|-------|-------------|
| 23323 | Swirl Guard |



New

SPLASH GUARD FOR POT SINKS

Material: 304 SS / 18-Gauge

| ITEM | DIMENSIONS | DESCRIPTION | ORIENTATION |
|-------|-----------------|-------------------------|-------------|
| 47727 | 21 15/16" x 11" | For 18" x 18" Pot Sinks | Left |
| 47728 | 21 15/16" x 11" | For 18" x 18" Pot Sinks | Right |
| 47729 | 23 15/16" x 11" | For 20" x 20" Pot Sinks | Left |
| 47730 | 23 15/16" x 11" | For 20" x 20" Pot Sinks | Right |
| 47731 | 24 15/16" x 11" | For 18" x 21" Pot Sinks | Left |
| 47732 | 24 15/16" x 11" | For 18" x 21" Pot Sinks | Right |
| 47733 | 27 15/16" x 11" | For 24" x 24" Pot Sinks | Left |
| 47734 | 27 15/16" x 11" | For 24" x 24" Pot Sinks | Right |



LEG BRACE FOR SINGLE TUB SINKS

| ITEM | DESCRIPTION |
|-------|---------------|
| 21135 | for 18" x 18" |
| 31484 | for 18" x 21" |
| 21139 | for 24" x 24" |

DOUBLE TUB SINKS

| ITEM | DESCRIPTION |
|-------|---------------|
| 21136 | for 18" x 18" |
| 31485 | for 18" x 21" |
| 21140 | for 24" x 24" |

TRIPLE TUB SINKS

| ITEM | DESCRIPTION |
|-------|---------------|
| 21137 | for 18" x 18" |
| 31486 | for 18" x 21" |
| 21141 | for 24" x 24" |



Leg Brace for One Sinkbowl

website: www.omcan.com
 email: sales@omcan.com
 call: 1.800.465.0234
 fax: 905.607.0234

All prices are SPECIAL NET CAD.
 OFFER ENDS: AUGUST 31, 2024



Limited quantities available. Prices valid to authorized Omcan Dealers only. Special prices on this flyer may not be included to any special freight program. E&OE. Prices will be subject to change as per exchange rates.

NOT APPLICABLE TO PRIOR PURCHASE.



SINKS



STAINLESS STEEL DROP IN SINKS - ONE TUB



| ITEM | DESCRIPTION | DIMENSIONS | WEIGHT |
|-------|--|------------------|-----------|
| 39778 | 9" x 9" x 5" One tub Drop in sink with flat top and 3.5" drain basket | 12" x 14" x 5" | 4 lbs |
| 39779 | 10" x 14" x 5" One tub Drop in sink with flat top and 3.5" drain basket | 13" x 19" x 5" | 5.1 lbs |
| 39780 | 10" x 14" x 10" One tub Drop in sink with flat top and 3.5" drain basket | 13" x 19" x 10" | 8.8 lbs |
| 39781 | 14" x 10" x 5" One tub Drop in sink with flat top and 3.5" drain basket | 17" x 15" x 5" | 2.7 lbs |
| 39784 | 12.5" x 10.25" x 5.5" One tub Drop in sink top with self-rimmed edge and 3.5" drain basket | 15" x 15" x 5.5" | 5.7 lbs |
| 39785 | 10" x 14" x 5" One tub Drop in sink with 6" Left-Back-Right splash and 3.5" drain basket | 13" x 19" x 5" | 9.5 lbs. |
| 39786 | 10" x 14" x 10" One tub Drop in sink with 6" Left-Back-Right splash and 3.5" drain basket | 13" x 19" x 5" | 12.8 lbs. |



STAINLESS STEEL DROP IN SINKS - TWO AND THREE TUB DROP IN SINK



| ITEM | DESCRIPTION | DIMENSIONS | WEIGHT |
|-------|--|--------------------|-----------|
| 39782 | 10" x 14" x 10" Two tub Drop in sink with flat top and 3.5" drain basket | 25"D x 19"W x 10"H | 16 lbs. |
| 39783 | 10" x 14" x 10" Three tub Drop in sink with flat top and 3.5" drain basket | 37"D x 19"W x 10"H | 25 lbs. |
| 44604 | 16" x 20" x 12" Triple Drop in Sink with flat top and 3.5" drain basket | 25"D x 55"W x 12"H | 53.7 lbs. |

website: www.omcan.com
 email: sales@omcan.com
 call: 1.800.465.0234
 fax: 905.607.0234

All prices are SPECIAL NET CAD.
 OFFER ENDS: AUGUST 31, 2024



Limited quantities available. Prices valid to authorized Omcan Dealers only. Special prices on this flyer may not be included to any special freight program. E&OE. Prices will be subject to change as per exchange rates.
 NOT APPLICABLE TO PRIOR PURCHASE.



SINKS



STAINLESS STEEL HAND SINKS - STANDARD MODELS

Made of high 20 gauge quality stainless steel. Comes with a 6 1/2" backsplash and mounting brackets. Also available with side splashes.



| ITEM | DESCRIPTION | BOWL LxWxH | WEIGHT | DIMENSIONSxH |
|--------|--|----------------|---------|----------------------|
| *44585 | Fabricated Hand Sink with 4" Gooseneck Faucet and Drain Basket | 10" x 12" x 5" | 12 lbs. | 15.25" x 17" x 13.5" |
| *44586 | Fabricated Hand Sink with Side Splashes, 4" Gooseneck Faucet and Drain Basket | 10" x 14" x 5" | 14 lbs. | 13" x 17" x 15.25" |
| *46507 | Fabricated Hand Sink with 4" Gooseneck Faucet and Drain Basket | 9" x 9" x 5" | 10 lbs. | 16" x 12" x 13" |
| *46582 | Fabricated Stainless Steel Wall Mounted Hand Sink With Two Holes | | | |
| 14337 | Drain plug for hand sink | | | |
| 31282 | Replacement hot cartridge for 22122, 37867 and 43034 | | | |
| 31283 | Replacement cold cartridge for 22122, 37867 and 43034 | | | |
| 46888 | Faucet for fabricated hand sink #44585 #44586 | | | |
| 44743 | Replacement cartridge pair (hot and cold) for #46888, 44585, 44586, 46507, 44583 | | | |



STAINLESS STEEL SINKS WITH KNEE VALVES

•Hand sink with faucet
•Made of high quality 20 and 18 gauge stainless steel
•Also available with side splashes



| ITEM | DESCRIPTION | BOWL LxWxH | WEIGHT | DIMENSIONS (DWH) |
|--------|--|----------------|-----------|-------------------|
| *46319 | Fabricated Hand Sink with Knee Valve Assembly | 14" x 10" x 5" | 22.9 lbs. | 15.2" x 18" x 14" |
| *46512 | Hand sink with knee valve assembly and side splashes | 14" x 10" x 5" | 25 lbs. | 14" x 18" x 15.2" |
| 46583 | Hand sink with one hole | | | |
| 21123 | Knee Valve Assembly | | | |
| 23332 | Knee Valve Assembly and Gooseneck faucet for sink | | | |
| 14337 | Drain plug for hand sink | | | |
| 28680 | Replacement hot or cold cartridge for 23518, 23332, 27173, 23521 | | | |



STAINLESS STEEL PEDESTAL SINKS

•Made of high quality 16 gauge stainless steel
•Comes with a 7.75" backsplash and 34" pedestal
•Also available with side splashes



| ITEM | DESCRIPTION | BOWL LxWxH | WEIGHT | DIMENSIONSxH |
|-------|----------------------------------|--------------------|---------|---------------------|
| 23515 | Pedestal sink | 16"x 13.75"x 5.75" | 50 lbs. | 13.75"x 18"x 41.75" |
| 27180 | Pedestal sink with side splashes | 16"x 13.75"x 5.75" | 50 lbs. | 13.75"x 18"x 41.75" |

| ITEM | DESCRIPTION |
|-------|--|
| 23521 | Stainless Steel Foot Valve |
| 28680 | Replacement hot or cold cartridge for 23518, 23332, 27173, 23521 |



website: www.omcan.com
email: sales@omcan.com
call: 1.800.465.0234
fax: 905.607.0234

All prices are SPECIAL NET CAD.
OFFER ENDS: AUGUST 31, 2024



Limited quantities available. Prices valid to authorized Omcan Dealers only. Special prices on this flyer may not be included to any special freight program. E&OE. Prices will be subject to change as per exchange rates.
NOT APPLICABLE TO PRIOR PURCHASE.



ICE BIN

- 1" Drain size
- Included plastic bottle holder
- 20-gauge 304 stainless steel bowl, top, back and body
- Galvanized leg and socket, plastic bullet feet and "U" shape leg bracing
- 18-gauge 430 stainless steel hat channel, back, side, bottom and intermediate shelf
- 3" high backsplash

| ITEM | DIMENSIONS |
|-------|-------------------|
| 43475 | 24" x 18.5" x 33" |
| 43476 | 36" x 18.5" x 33" |



Product might not be exactly as shown

BAR DRAIN BOARD

- 18-gauge 304 stainless steel drainboard, sides, front and back, open base
- Galvanized leg and socket, plastic bullet feet
- 1" lps drain tubing
- 3" back-splash

| ITEM | DIMENSIONS |
|-------|-----------------|
| 43472 | 18" x 24" x 33" |



Product might not be exactly as shown

INSULATED ICE BIN

- Post-mix aluminum cold plate with stainless steel tubing circuits
- 20-gauge 304 stainless steel bowl, top, back and body
- Galvanized leg and socket, plastic bullet feet and "U" shape leg bracing
- 3" high backsplash

| ITEM | DIMENSIONS |
|-------|----------------------|
| 43477 | 18.5"D x 24"W x 33"H |
| 43478 | 18.5"D x 36"W x 33"H |



Product might not be exactly as shown

UNDER BAR SINKS



| ITEM | 10" x 14" x 10" COMPARTMENT SIZE | OVERALL DIMENSIONS D" x W" x H" | WEIGHT |
|-------|--------------------------------------|---------------------------------|-----------|
| 44600 | 1 compartment with no drain boards | 18 3/4" x 14.5" x 33" | 35.2 lbs. |
| 44601 | 3 compartments with no drain boards | 18 3/4" x 38.5" x 33" | 57.2 lbs. |
| 25274 | 3 compartments with two drain boards | 18 3/4" x 60" x 37" | 77 lbs. |
| 44627 | 3 compartments with two drain boards | 18 3/4" x 70" x 33" | 83.6 lbs. |
| 44603 | 4 compartments with two drain boards | 18 3/4" x 72" x 33" | 85.8 lbs. |



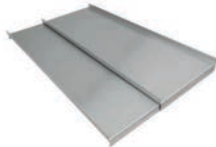
Product might not be exactly as shown

44601

SLIDING COVERS

- 18-gauge 304 stainless steel material

| ITEM | DESCRIPTION | DIMENSIONS |
|-------|--|---------------|
| 44622 | 23.5" Sliding Cover for 43475 and 43477 Ice Bins | 16.5" x 23.5" |
| 44623 | 35.5" Sliding Cover for 43476 and 43478 Ice Bins | 16.5" x 35.5" |



STAINLESS STEEL CORRUGATED TOP GLASS RACK STORAGE

- 18-gauge 304 stainless steel material
- 1" drain size

| ITEM | DIMENSIONS |
|-------|-----------------|
| 44596 | 23" x 24" x 33" |



STAINLESS STEEL LEG AND LEG BRACE FOR ICE BINS

| ITEM | LEG BRACE FOR | DIMENSIONS |
|-------|--------------------------------------|-------------------|
| 44625 | 18" x 24" Ice Bins (43475 and 43477) | 13 3/4" x 19 5/8" |
| 44626 | 18" x 36" Ice Bins (43476 and 43478) | 31 5/8" x 13 3/4" |
| 44624 | 14" (43475 / 43476 / 43477 / 43478) | |



STAINLESS STEEL FLAT TOP GLASS RACK STORAGE

- 18-gauge 304 stainless steel material
- 1" drain size

| ITEM | DIMENSIONS |
|-------|-----------------|
| 44595 | 23" x 24" x 33" |



BLENDER STATION

- 18-gauge 304 stainless steel recessed step, backsplash, dump sink, sides and hat channel, open back and bottom
- Galvanized leg and socket, plastic bullet feet
- 1" lps drain included
- 9" x 9" x 4" dump sink
- 3" backsplash

| ITEM | DIMENSIONS |
|-------|--------------------|
| 43473 | 15"D x 23"W x 30"H |



Product might not be exactly as shown

LIQUOR DISPLAY RACK

- 18-gauge 304 stainless steel bottom, back, sides, hat channel and 5-tiered step
- 16-gauge 304 stainless steel 2" high strap
- Galvanized leg and socket, plastic bullet foot
- 6" high backsplash

| ITEM | DIMENSIONS |
|-------|--------------------|
| 43479 | 25"D x 24"W x 36"H |



Product might not be exactly as shown





New ICE BIN WITH 2 HOLDERS

- 1" Drain size
- Included plastic bottle holder
- 20-gauge 304 stainless steel bowl, top, back and body
- 3" high backsplash

| ITEM | DIMENSIONS |
|-------|-----------------|
| 47519 | 24" x 29" x 33" |
| 47520 | 36" x 29" x 33" |



New PORTABLE BAR

FEATURES:

- Stainless steel construction
- Black finish flat top
- 19" x 12.5" x 11" drop-in ice bin with drain and shut-off valve
- Cutting board to cover ice bin
- Bottom storage with hinge doors and locks
- Corner perimeter bumpers
- Can opener
- (x4) 5" swivel caster (2 with brakes)
- Speed rails with a total of 16-bottle capacity

WITH OPEN BOTTOM

| ITEM | DIMENSIONS |
|-------|-----------------|
| 48066 | 61" x 23" x 47" |
| 48068 | 74" x 23" x 47" |



WITH OPEN BOTTOM

WITH HINGE DOORS

| ITEM | DIMENSIONS |
|-------|-----------------|
| 48067 | 61" x 23" x 47" |
| 48069 | 74" x 23" x 47" |



WITH HINGE DOORS

New STAINLESS STEEL LIQUOR DISPLAY RACK WITH 3" BACKSPLASH

- 18-gauge 304 stainless steel bowl, top, back and body
- 3" high backsplash

| ITEM | DIMENSIONS |
|-------|-----------------|
| 47522 | 24" x 29" x 33" |
| 47523 | 12" x 29" x 33" |



New 12" BLENDER STATION WITH BACKSPLASH AND FAUCET

- 18-gauge 304 stainless steel bowl, top, back and body
- 3" high backsplash

| ITEM | DIMENSIONS |
|-------|-----------------|
| 47521 | 12" x 29" x 33" |



WALL MOUNTED MOP SINK FAUCET

| ITEM | DESCRIPTIONS |
|-------|--|
| 47502 | Wall Mounted Mop Sink Faucet With 6 1/2" Swing Spout, 8" Centers |



CORNER MOP SINK WITH DRAIN BASKET

- 16-gauge 304 stainless steel
- drain pipe size 2.36" (drain pipe excluded)

| ITEM | OVERALL DIMENSIONS |
|-------|---------------------|
| 47470 | 26.5" x 26.5" x 16" |



STAINLESS STEEL MOP SINK WITH DRAIN BASKET

Made of high quality 16 gauge stainless steel.
Drain Pipe Size: 3" PVC or Cast Iron

44605
44606
44607



24412

| ITEM | BOWL DIMENSIONS (DWH) | DIMENSIONS (DWH) |
|-------|-----------------------|--------------------|
| 24412 | 16" x 20" x 6" | 21" x 25.25" x 11" |
| 44605 | 20" x 28" x 6" | 25" x 33" x 10" |
| 44606 | 16" x 20" x 12" | 21" x 25" x 16" |
| 44607 | 20" x 28" x 12" | 25" x 33" x 16" |

New HAND SINK CABINET STAND WITH FAUCET

Water Pipe, 2-Door Storage, Storage Tray

- All Stainless steel
- Drain hose, faucet, water pipe, bottle opener
- 2 Doors cabinet 3.5 cu.ft (0.1m3)
- Storage tray



| ITEM | 47961 |
|-------------------|--------------------------------------|
| MATERIAL | Stainless Steel |
| CASTER | x2- 3" fixed x2-3" locking swivel |
| DIMENSIONS | 32" x 26" x 37.9" |
| ASSEMBLY REQUIRED | YES |



PORTABLE HAND SINK WITH BACKSPLASH AND WATER HEATER TANK AND PUMP

| ITEM | 46788 |
|----------------------------|----------------------|
| WATER TANK CAPACITY | 2 x 18.9 L / 5 Gal |
| WASTE TANK CAPACITY | 2 x 28.4 L / 7.5 Gal |
| WATER HEATER TANK CAPACITY | 7.6 L / 2 Gal |
| ELECTRICAL | 110-120V/60Hz/1Ph |
| AMPS | 11.85 A |
| FABRICATED BOWL | 12" x 14" x 6" |
| WEIGHT | 69.5 lb. / 31.5 kg. |
| DXWXH | 25.3" x 34.4" x 38.3 |



46788



HAND SINK WITH COMBINED FLOOR MOP SINK

- Low lead gooseneck faucet
- 1.5" drain basket
- 3.5" drain basket for mop sink



47246

| ITEM | 47246 |
|-----------------------|---|
| BOWL DIMENSIONS (DWH) | Hand Sink: 14" x 10" x 5.38 Mop Sink: 15" x 13" x 6" |
| DIMENSIONS (DWH) | 15.31" x 17" x 34" (8" with Backsplash) |





SINKS AND ACCESSORIES



SOILED DISH TABLES WITH SINK



New Size 72"

LEFT SIDE

| ITEM | WIDTH | OVERALL DIMENSIONS |
|-------|-------|--------------------|
| 28480 | 26" | 30.37" x 26" x 44" |
| 28482 | 36" | 30.37" x 36" x 44" |
| 28484 | 48" | 30.37" x 48" x 44" |
| 28486 | 60" | 30.37" x 60" x 44" |
| 47748 | 72" | 30.37" x 72" x 44" |



RIGHT SIDE

| ITEM | WIDTH | OVERALL DIMENSIONS |
|-------|-------|--------------------|
| 28481 | 26" | 30.37" x 26" x 44" |
| 28483 | 36" | 30.37" x 36" x 44" |
| 28485 | 48" | 30.37" x 48" x 44" |
| 28487 | 60" | 30.37" x 60" x 44" |
| 47747 | 72" | 30.37" x 72" x 44" |



28488

STAINLESS STEEL PRE-RINSE BASKET

Our pre-rinse basket prevents food scraps from going into your sink drains. Made of stainless steel for durability.



| ITEM | OVERALL DIMENSIONS |
|-------|--------------------|
| 28488 | 19.5" x 19.5" x 5" |

STAINLESS STEEL UNDER COUNTER DISH TABLES WITH BACKSPLASH

LEFT SIDE

| ITEM | DESCRIPTION |
|-------|--|
| 40189 | 48" left side under counter dish table |
| 40191 | 60" left side under counter dish table |

RIGHT SIDE

| ITEM | DESCRIPTION |
|-------|---|
| 40190 | 48" right side under counter dish table |
| 40192 | 60" right side under counter dish table |



40189



CLEAN DISH TABLES *New Size 72"*



LEFT SIDE

| ITEM | WIDTH |
|-------|-------|
| 28472 | 26" |
| 28474 | 36" |
| 28476 | 48" |
| 28478 | 60" |
| 47746 | 72" |

RIGHT SIDE

| ITEM | WIDTH |
|-------|-------|
| 28473 | 26" |
| 28475 | 36" |
| 28477 | 48" |
| 28479 | 60" |
| 47745 | 72" |



47745

47746

REPLACEMENT LEG BRACE FOR SOILED/CLEAN/UNDERCOUNTER DISH TABLE

| ITEM | DESCRIPTION |
|-------|--|
| 47688 | 15" Leg Brace for item 28480 / 28481 / 40189 / 40190 / 40191 / 40192 |
| 47689 | 24" Leg Brace for item 28484 / 28485 / 28486 / 28487 / 28472 / 28473 / 28474 / 28475 / 28476 / 28477 / 28478 / 28479 |



47688

REPLACEMENT LEG FOR SOILED/CLEAN/UNDERCOUNTER DISH TABLE (2 pcs/set)

| ITEM | DESCRIPTION |
|-------|--|
| 47704 | 25" Leg for item 28480 / 28481 / 40189 / 40190 / 40191 / 40192 |
| 47705 | 33" Leg for item 28484 / 28485 / 28486 / 28487 / 28472 / 28473 / 28474 / 28475 / 28476 / 28477 / 28478 / 28479 |



47704

website: www.omcan.com
 email: sales@omcan.com
 call: 1.800.465.0234
 fax: 905.607.0234

All prices are SPECIAL NET CAD.
 OFFER ENDS: AUGUST 31, 2024

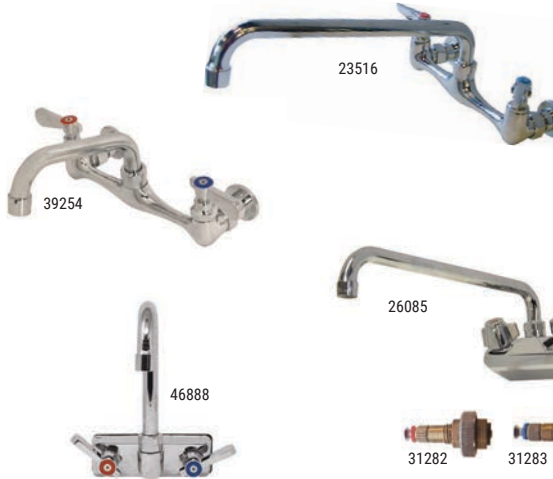


Limited quantities available. Prices valid to authorized Omcan Dealers only. Special prices on this flyer may not be included to any special freight program. E&OE. Prices will be subject to change as per exchange rates.
 NOT APPLICABLE TO PRIOR PURCHASE.



GOOSE-NECK FAUCETS

| ITEM | DESCRIPTION |
|-------|--------------------------------------|
| 22289 | Goose-neck faucet for tub sinks |
| 37869 | Replacement hot cartridge for 22289 |
| 37870 | Replacement cold cartridge for 22289 |



DECK-MOUNTED SINKS FAUCETS

| ITEM | DESCRIPTION |
|-------|---|
| 39787 | Deck mounted 4" centers with 3.5" goose neck spout faucet for drop in sinks |
| 39788 | Deck mounted 4" centers with 9" goose neck spout faucet for drop in sinks |
| 44719 | Deck mounted 4" centers with 10" long spout faucet for #44604 |
| 31282 | Replacement hot cartridge for 23703, 39787, 39788 and 26085 |
| 31283 | Replacement cold cartridge for 23703, 39787, 39788 and 26085 |

SPLASH MOUNTED FAUCETS

New Size 16"

| ITEM | DESCRIPTION |
|-------|--|
| 39254 | 8" centres, swing nozzle 6" spout |
| 39255 | 8" centres, swing nozzle 8" spout |
| 39256 | 8" centres, swing nozzle 10" spout |
| 23516 | 8" centres, swing nozzle 12" spout |
| 23517 | 8" centres, swing nozzle 14" spout |
| 47819 | 8" centres, swing nozzle 16" spout |
| 28491 | Replacement hot cartridge for 27225, 39254, 39255, 39256, 23516 and 23517 |
| 28492 | Replacement cold cartridge for 27225, 39254, 39255, 39256, 23516 and 23517 |



BAR SINK FAUCET

New Size 6", 8" & 10"

| ITEM | DESCRIPTION |
|-------|--|
| 47820 | Faucet for bar sink, swing nozzle, 6" spout |
| 65875 | Faucet for bar sink, swing nozzle, 8" spout |
| 47821 | Faucet for bar sink, swing nozzle, 10" spout |
| 26085 | Faucet for bar sink, swing nozzle, 12" spout |

FAUCET HAND SINK

| ITEM | DESCRIPTION |
|-------|---|
| 46888 | Faucet for fabricated hand sink #44585 #44586 |

REPLACEMENT HOT AND COLD CARTRIDGE

| ITEM | DESCRIPTION |
|-------|--|
| 31282 | Replacement hot cartridge for 23703, 39787, 39788 and 26085 |
| 31283 | Replacement cold cartridge for 23703, 39787, 39788 and 26085 |



PRE RINSE ASSEMBLY

| ITEM | DESCRIPTION |
|-------|---|
| 22123 | Pre-rinse assembly complete |
| 22124 | Pre-rinse assembly complete with faucet |

REPLACEMENT HOT AND COLD CARTRIDGE

| ITEM | DESCRIPTION |
|-------|--|
| 28680 | Replacement hot and cold cartridge for 22123 and 22124 |

PRE RINSE SPRAY VALVE ASSEMBLY

- Solid construction
- Flexible stainless steel hose
- Spray Valve
- Check valve prevents cross-flow
- Best used in food service, commercial kitchens and restaurants

| ITEM | DESCRIPTION |
|-------|--|
| 23518 | Replacement Pre-rinse spray valve assembly |



website: www.omcan.com
 email: sales@omcan.com
 call: 1.800.465.0234
 fax: 905.607.0234

All prices are SPECIAL NET CAD.
 OFFER ENDS: AUGUST 31, 2024



Limited quantities available. Prices valid to authorized Omcan Dealers only. Special prices on this flyer may not be included to any special freight program. E&OE. Prices will be subject to change as per exchange rates. ***NOT APPLICABLE TO PRIOR PURCHASE.***



HEAD OFFICE AND DISTRIBUTION CENTER
 3115 Pepper Mill Court,
 Mississauga, Ontario, L5L 4X5 Canada

EASTERN USA DISTRIBUTION CENTER
 4450 Witmer Industrial Estates Drive, Units 4,
 Niagara Falls, New York, 14305, USA

WESTERN USA DISTRIBUTION CENTER
 12854 E. Florence Avenue,
 Santa Fe Springs, California, 90670, USA